



GROWING TOGETHER

# TRACTOR & HARVESTER

BIAS AGRICULTURAL TIRES





# TRACTOR & HARVESTER



## BIAS AGRICULTURAL TIRES

Have you got a small lot of land or wide fields stretching over several hectares? BKT has the perfect tire that suits your needs. BKT has had a focus on research and development of tires for tractors and harvesters ever since creating specialist product ranges for any specific need. As these types of agricultural machinery are essential for every farming business, do not ignore the key role of tires! It is important to choose products that care for the most delicate soils ensuring at the same time high load capacity as well as operators' comfort without forgetting reduced operating costs. All this even under extreme conditions. Find out which BKT product is perfect to fit your needs!



*Radials*

Radial tires have cord plies that are arranged running radially from bead to bead around the tire. Sidewall and tread have independent functional features providing more flexibility, great performance, durability, and fuel economy.



*Bias*

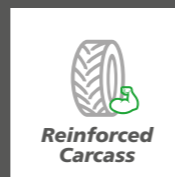
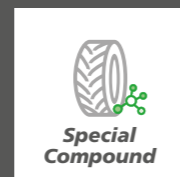
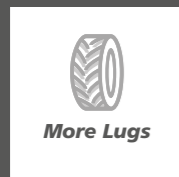
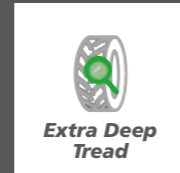
Bias tires have cord plies that are arranged running diagonally from bead to bead across the tire. Layers overlap forming a crisscross pattern. This design features extraordinary sidewall resistance, puncture resistance and high load capacity.



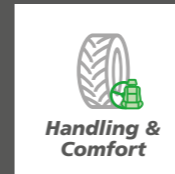
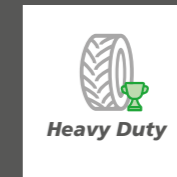
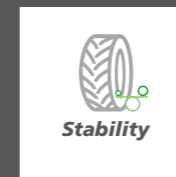
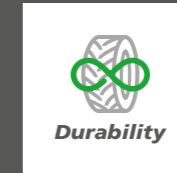
# TRACTOR & HARVESTER

BIAS AGRICULTURAL TIRES

## TECHNOLOGIES



## PERFORMANCE



# BIAS TRACTOR & HARVESTER TIRES



TR 126



[ p. 10 ]



TR 128



[ p. 12 ]



TR 133



[ p. 13 ]



TRAC FARM PLUS



[ p. 43 ]



COMMANDER (R)



[ p. 44 ]



TR 270



[ p. 46 ]



TR 135



[ p. 14 ]



TR 136



[ p. 28 ]



TR 144



[ p. 30 ]



TR 273



[ p. 48 ]



TR 318



[ p. 50 ]



PUDDLE SPECIAL (A)



[ p. 51 ]



TR 171



[ p. 32 ]



FARM 2000 PLUS



[ p. 37 ]



FARM 2000



[ p. 38 ]



PUDDLE SPECIAL (B)



[ p. 51 ]



TR 459



[ p. 52 ]



TR 461



[ p. 54 ]



FARM SPECIAL



[ p. 40 ]



AS 2001



[ p. 41 ]



TRAC FARM



[ p. 42 ]



TR 463



[ p. 55 ]



AT 316



[ p. 56 ]



TR 393



[ p. 57 ]



# BIAS TRACTOR & HARVESTER TIRES

  
STAR TRAC



[ p. 58 ]

  
TR 137



[ p. 59 ]

  
TR 360



[ p. 60 ]

  
COMMANDER TWIN RIB



[ p. 72 ]

  
COMMANDER 3 RIB



[ p. 73 ]

  
POWER RIB F2



[ p. 74 ]

  
TR 882



[ p. 61 ]

  
FLOTATION 558



[ p. 62 ]

  
TF 8181



[ p. 64 ]

  
PRO RIB F2M



[ p. 75 ]

  
RIB F3



[ p. 76 ]

  
STEER FARM



[ p. 77 ]

  
TF 9393



[ p. 67 ]

  
TF 9090



[ p. 68 ]

  
COMMANDER (F)



[ p. 71 ]



Bias



# TR 126

TR 126 is designed to fit small tractors in soil tillage operations. The deep lugs and the tread pattern provide excellent traction and outstanding load capacity features providing best tire performance in all operating conditions.

### Performance



High Load Capacity



Traction

Ø 14"	Tire size	RIM		S.W. (mm)	O.D. (mm)	SLR (mm)	RC (mm)	Version	PR	Type	LI/SS
		Rec.	Alt.								
	6 - 14	5 JA ; 5 KB	-	157	655	305	1978	STD	4	TT	66A6
	6 - 14	5 JA ; 5 KB	-	157	655	305	1978	STD	4	TL	66A6
	7 - 14	5 JA ; 5 KB	-	170	690	320	2070	STD	4	TT	72A6

STD: Standard



Ø 14"	Tire size	RIM		S.W. (mm)	O.D. (mm)	SLR (mm)	RC (mm)	Version	PR	Type	LI/SS
		Rec.	Alt.								
	7 - 14	5 JA ; 5 KB	-	170	690	320	2070	STD	4	TL	72A6
	7 - 14	5 JA ; 5 KB	-	170	690	320	2070	STD	8	TT	95A6

STD: Standard





Bias



63



# TR 128

TR 128 has been specially designed for utility tractors and rototillers. The wide and deep lug design and the special cut-and-chip resistance compound provide an extended tire service life. TR 128 features maximum traction on wet soil.

### Performance



High Load Capacity



Traction



Cut and Chip Resistance

Ø 12"	Tire size	RIM		S.W. (mm)	O.D. (mm)	SLR (mm)	RC (mm)	Version	PR	Type	LI/SS
		Rec.	Alt.								
	5 - 12	4 JA	-	127	554	265	1638	STD	4	TT	-
	5 - 12	4 JA	-	127	554	265	1638	STD	6	TT	-
	6.00 - 12	4.00 E	4.00 E DT	160	635	303	1910	STD	4	TT	-
	6.00 - 12	4.00 E	4.00 E DT	160	635	303	1910	STD	6	TT	-
	180/85 D 12	5 JA	-	165	612	295	1847	STD	4	TT	63 A6
	180/85 D 12	5 JA	-	165	612	295	1847	STD	6	TT	-
Ø 14"	7 - 14	5 JA	5 J	173	690	334	2094	STD	8	TT	-

STD: Standard



# TR 133

TR 133 has been specially designed for tractors in soil tillage applications. Thanks to the increased number of lugs, this tire features excellent traction as well as enhanced self-cleaning properties. TR 133 provides an extended tire life-cycle.

Ø 38"	Tire size	RIM		S.W. (mm)	O.D. (mm)	SLR (mm)	RC (mm)	Version	PR	Type	LI/SS
		Rec.	Alt.								
	13.6 - 38	W 12	W 11	350	1580	735	4843	STD	10	TT	136 A6

STD: Standard



Bias



R-1



136

### Technologies



More Lugs

### Performance



Self-Cleaning



Traction



High Load Capacity



Durability





Bias



# TR 135

TR 135 is best suitable for tractors in soil tillage applications. Its reinforced casing and the special cut-and-chip resistance compound provide an extended tire life-cycle. Traction, self-cleaning properties and load capacity are key features which make the TR 135 tire the ideal partner even on the most difficult ground conditions.

### Technologies



Special Compound



Reinforced Carcass

### Performance



Traction



High Load Capacity



Self-Cleaning



Durability



Cut and Chip Resistance



Ø 20"	Tire size	RIM		S.W. (mm)	O.D. (mm)	SLR (mm)	RC (mm)	Version	PR	Type	LI/SS
		Rec.	Alt.								
	8.00 - 20	5.50 F	-	225	965	448	2837	STD	6	TT	105 A6
	8.00 - 20	5.50 F	-	225	965	448	2837	STD	8	TT	111 A6
	9.5 - 20	W 8	W 7	240	955	444	2888	STD	6	TT	102 A6
	9.5 - 20	W 8	W 7	240	955	444	2888	STD	6	TL	102 A6
	9.5 - 20	W 8	W 7	240	955	444	2888	STD	8	TT	107 A6
	9.5 - 20	W 8	W 7	240	955	444	2888	HD	8	TT	107 A6
	10.00 - 20	7.5	-	280	1075	495	3160	STD	10	TT	152 A2
	11.2 - 20	W 10	W 9; 9	292	1020	466	3077	STD	8	TT	111 A6
	12.4 - 20	W 11	W 9; 9; W 10; 11	325	1075	500	3160	STD	8	TT	116 A6
	12.4 - 20	W 11	W 9; 9; W 10; 11	325	1075	500	3160	HD	8	TT	116 A6
Ø 24"	8.3 - 24	W 7	W 6	211	995	469	2985	STD	6	TT	100 A6
	8.3 - 24	W 7	W 6	211	995	469	2985	STD	8	TT	105 A6
	8.3 - 24	W 7	W 6	211	995	469	2985	HD	8	TT	105 A6
	8.3 - 24	W 7	W 6	211	995	469	2985	HD	10	TT	111 A6
	9.5 - 24	W 8	W 7	241	1060	502	3234	STD	6	TT	106 A6
	9.5 - 24	W 8	W 7	241	1060	502	3234	STD	6	TL	106 A6

STD: Standard - HD: Heavy Duty

Ø 24"	Tire size	RIM		S.W. (mm)	O.D. (mm)	SLR (mm)	RC (mm)	Version	PR	Type	LI/SS
		Rec.	Alt.								
	9.5 - 24	W 8	W 7	241	1060	502	3234	STD	8	TT	112 A6
	9.5 - 24	W 8	W 7	241	1060	502	3234	HD	8	TT	112 A6
	9.5 - 24	W 8	W 7	241	1060	502	3234	STD	10	TT	116 A6
	9.5 - 24	W 8	W 7	241	1060	502	3234	HD	10	TT	116 A6
	11.2 - 24	W 10	W 9	284	1105	517	3399	STD	6	TT	110 A6
	11.2 - 24	W 10	W 9	284	1105	517	3399	STD	8	TT	116 A6
	11.2 - 24	W 10	W 9	284	1105	517	3399	STD	8	TL	116 A6
	11.2 - 24	W 10	W 9	284	1105	517	3398	HD	8	TT	116 A6
	11.2 - 24	W 10	W 9	284	1105	517	3399	HD	10	TT	120 A6
	12.4 - 24	W 11	W 9; W 10	315	1160	543	3573	STD	6	TT	115 A6
	12.4 - 24	W 11	W 9; W 10	315	1160	543	3573	STD	8	TT	121 A6
	12.4 - 24	W 11	W 9; W 10	315	1160	543	3573	STD	8	TL	121 A6
	12.4 - 24	W 11	W 9; W 10	315	1160	543	3573	HD	8	TT	121 A6
	12.4 - 24	W 11	W 9; W 10	315	1160	543	3573	HD	8	TL	121 A6
	12.4 - 24	W 11	W 9; W 10	315	1160	543	3573	HD	8	TT	121 A6
	12.4 - 24	W 11	W 9; W 10	315	1160	543	3573	STD	10	TT	125 A6

STD: Standard - HD: Heavy Duty





Bias



# TR 135

TR 135 is best suitable for tractors in soil tillage applications. Its reinforced casing and the special cut-and-chip resistance compound provide an extended tire life-cycle. Traction, self-cleaning properties and load capacity are key features which make the TR 135 tire the ideal partner even on the most difficult ground conditions.

### Technologies



### Performance



Ø 24"	Tire size	RIM		S.W. (mm)	O.D. (mm)	SLR (mm)	RC (mm)	Version	PR	Type	LI/SS
		Rec.	Alt.								
	12.4 - 24	W 11	W 9;W 10	315	1160	543	3573	STD	12	TT	128 A6
	12.4 - 24	W 11	W 9;W 10	315	1160	543	3573	STD	12	TL	128 A6
	12.4 - 24	W 11	W 9;W 10	315	1160	543	3573	SPL	12	TT	128 A6
	13.6 - 24	W 12	W 11	355	1220	562	3698	STD	8	TT	123 A6
	13.6 - 24	W 12	W 11	355	1220	562	3698	STD	8	TL	123 A6
	13.6 - 24	W 12	W 11	355	1220	562	3698	HD	8	TT	123 A6
	13.6 - 24	W 12	W 11	355	1220	562	3698	STD	12	TT	130 A6
	13.6 - 24	W 12	W 11	355	1220	562	3698	HD	12	TT	130 A6
	14.9 - 24	W 13	W 12;W 11	378	1265	576	3837	STD	8	TT	128 A6
	14.9 - 24	W 13	W 12;W 11	378	1265	576	3837	STD	8	TL	128 A6
	14.9 - 24	W 13	W 11;W 12	378	1265	576	3837	HD	8	TT	128 A6
	14.9 - 24	W 13	W 11;W 12	378	1265	576	3837	HD	8	TL	128 A6
	14.9 - 24	W 13	W 12;W 11	378	1265	576	3837	HD	10	TL	132 A6
	14.9 - 24	W 13	W 11;W 12	378	1265	576	3837	STD	12	TT	135 A6
	14.9 - 24	W 13	W 12;W 11	378	1265	576	3837	STD	12	TL	135 A6

STD: Standard - SPL: Special - HD: Heavy Duty



Ø 24"	Tire size	RIM		S.W. (mm)	O.D. (mm)	SLR (mm)	RC (mm)	Version	PR	Type	LI/SS
		Rec.	Alt.								
	16.9 - 24	W 15 L	W 14 L	429	1335	613	3925	STD	8	TT	133 A6
	16.9 - 24	W 15 L	W 14 L	429	1335	613	3925	STD	8	TL	133 A6
	16.9 - 24	W 15 L	W 14 L	429	1335	613	3925	HD	8	TT	133 A6
	16.9 - 24	W 15 L	W 14 L	429	1335	613	3925	STD	10	TT	136 A6
	16.9 - 24	W 15 L	W 14 L	429	1335	613	3925	STD	10	TL	136 A6
	16.9 - 24	W 15 L	W 14 L	429	1335	613	3925	STD	12	TT	140 A6
	16.9 - 24	W 15 L	W 14 L	429	1335	613	3925	HD	12	TT	140 A6
Ø 26"	14.9 - 26	W 13	W 11;W 12	375	1315	608	3863	STD	8	TT	129 A6
	14.9 - 26	W 13	W 11;W 12	375	1315	608	3863	HD	8	TT	129 A6
	14.9 - 26	W 13	W 11;W 12	375	1315	608	3863	STD	12	TT	136 A6
	16.9 - 26	W 15 L	W 14 L	430	1380	625	4183	STD	10	TT	137 A6
	16.9 - 26	W 15 L	W 14 L	430	1380	625	4183	STD	10	TL	137 A6
	16.9 - 26	W 15 L	W 14 L	430	1380	625	4183	STD	12	TT	140 A6
	23.1 - 26	DW 20 B ; DW 20 A	-	587	1585	700	4615	STD	12	TL	153 A6
	23.1 - 26	DW 20 B ; DW 20 A	-	587	1585	700	4615	STD	12	TT	153 A6

STD: Standard - HD: Heavy Duty



Bias



# TR 135

TR 135 is best suitable for tractors in soil tillage applications. Its reinforced casing and the special cut-and-chip resistance compound provide an extended tire life-cycle. Traction, self-cleaning properties and load capacity are key features which make the TR 135 tire the ideal partner even on the most difficult ground conditions.

### Technologies



Special Compound



Reinforced Carcass

### Performance



Traction



High Load Capacity



Self-Cleaning



Durability



Cut and Chip Resistance



Ø 26"	Tire size	RIM		S.W. (mm)	O.D. (mm)	SLR (mm)	RC (mm)	Version	PR	Type	LI/SS
		Rec.	Alt.								
	23.1 - 26	DW 20 B ; DW 20 A	-	587	1585	700	4615	STD	12	TL	153 A6
	23.1 - 26	DW 20 B ; DW 20 A	-	587	1585	700	4615	DB	12	TL	153 A6
	23.1 - 26	DW 20 B ; DW 20 A	-	587	1585	700	4615	DB	12	TT	153 A6
	23.1 - 26	DW 20 B ; DW 20 A	-	587	1585	700	4615	STD	14	TL	156 A6
	23.1 - 26	DW 20 B ; DW 20 A	-	587	1585	700	4615	STD	16	TL	159 A6
	23.1 - 26	DW 20 B ; DW 20 A	-	587	1585	700	4615	STD	16	TT	159 A6
	23.1 - 26	DW 20 B ; DW 20 A	-	587	1585	700	4615	DB	16	TL	159 A6
	23.1 - 26	DW 20 B ; DW 20 A	-	587	1585	700	4615	DB HD	16	TL	159 A6
	23.1 - 26	DW 20 B ; DW 20 A	-	587	1585	700	4615	HD	16	TT	159 A6
	23.1 - 26	DW 20 B ; DW 20 A	-	587	1585	700	4615	DB	18	TL	161 A6
Ø 28"	8.3 - 28	W 7	W 6	213	1104	523	3246	STD	6	TT	103 A6
	8.3 - 28	W 7	W 6	213	1104	523	3246	STD	8	TT	108 A6
	9.5 - 28	W 8	W 7	235	1155	548	3557	STD	6	TT	108 A6
	9.5 - 28	W 8	W 7	235	1155	548	3557	STD	8	TT	114 A6
	11.2 - 28	W 10	W 9	284	1205	565	3543	STD	8	TT	118 A6

STD: Standard - DB: Dual Bead - DB HD: Dual Bead HD

Ø 28"	Tire size	RIM		S.W. (mm)	O.D. (mm)	SLR (mm)	RC (mm)	Version	PR	Type	LI/SS
		Rec.	Alt.								
	11.2 - 28	W 10	W 9	284	1205	565	3543	STD	8	TL	118 A6
	11.2 - 28	W 10	W 9	284	1205	565	3543	HD	8	TT	118 A6
	11.2 - 28	W 10	W 9	284	1205	565	3543	STD	10	TT	122 A6
	12.4 - 28	W 11	W 9 ; W 10	325	1260	584	3876	STD	6	TT	117 A6
	12.4 - 28	W 11	W 9 ; W 10	325	1260	584	3876	STD	8	TT	123 A6
	12.4 - 28	W 11	W 9 ; W 10	325	1260	584	3876	STD	8	TL	123 A6
	12.4 - 28	W 11	W 9 ; W 10	325	1260	584	3876	HD	8	TT	123 A6
	12.4 - 28	W 11	W 9 ; W 10	325	1260	584	3876	STD	10	TT	127 A6
	12.4 - 28	W 11	W 9 ; W 10	325	1260	584	3876	STD	12	TT	131 A6
	13.6 - 28	W 12	W 11	345	1310	606	3908	STD	8	TT	125 A6
	13.6 - 28	W 12	W 11	345	1310	606	3908	STD	8	TL	125 A6
	13.6 - 28	W 12	W 11	345	1310	606	3908	HD	8	TT	125 A6
	13.6 - 28	W 12	W 11	345	1310	606	3908	STD	12	TT	134 A6
	13.6 - 28	W 12	W 11	345	1310	606	3908	STD	14	TT	137 A6
	14.9 - 28	W 13	W 11 ; W 12	378	1365	634	4170	STD	6	TT	125 A6
	14.9 - 28	W 13	W 11 ; W 12	378	1365	634	4170	STD	8	TT	130 A6
	14.9 - 28	W 13	W 11 ; W 12	378	1365	634	4170	STD	8	TL	130 A6

STD: Standard - HD: Heavy Duty



Bias



# TR 135

TR 135 is best suitable for tractors in soil tillage applications. Its reinforced casing and the special cut-and-chip resistance compound provide an extended tire life-cycle. Traction, self-cleaning properties and load capacity are key features which make the TR 135 tire the ideal partner even on the most difficult ground conditions.

### Technologies



Special Compound



Reinforced Carcass

### Performance



Traction



High Load Capacity



Self-Cleaning



Durability



Cut and Chip Resistance



Ø 28"	Tire size	RIM		S.W. (mm)	O.D. (mm)	SLR (mm)	RC (mm)	Version	PR	Type	LI/SS
		Rec.	Alt.								
	14.9 - 28	W 13	W 11; W 12	378	1365	634	4170	HD	8	TT	130A6
	14.9 - 28	W 13	W 11; W 12	378	1365	634	4170	STD	12	TT	137A6
	14.9 - 28	W 13	W 11; W 12	378	1365	634	4170	HD	12	TT	137A6
	14.9 - 28	W 13	W 11; W 12	378	1365	634	4170	STD	14	TT	139A6
	18.4 - 28	W 16 L	W 15 L	467	1501	691	4413	STD	8	TL	138A6
	18.4 - 28	W 16 L	W 15 L	467	1501	691	4413	STD	12	TL	147A6
Ø 30"	Tire size	Rec.	Alt.	S.W. (mm)	O.D. (mm)	SLR (mm)	RC (mm)	Version	PR	Type	LI/SS
	7.2 - 30	W 6	-	185	1095	523	3219	STD	6	TT	95A6
	9.5 - 30	W 8	W 7	241	1200	567	3528	STD	6	TT	109A6
	9.5 - 30	W 8	W 7	241	1200	567	3528	STD	8	TT	115A6
	14.9 - 30	W 13	W 11; W 12	378	1415	659	4316	STD	8	TT	131A6
	15 - 30	W 16 L	W 15 L	460	1545	714	4542	STD	12	TT	149A6
	15 - 30	W 16 L	W 15 L	460	1545	714	4542	STD	14	TT	151A6
	16.9 - 30	W 15 L	W 14 L	429	1485	678	4535	STD	8	TT	137A6
	16.9 - 30	W 15 L	W 14 L	429	1485	678	4535	STD	10	TT	139A6
	16.9 - 30	W 15 L	W 14 L	429	1485	678	4535	STD	14	TT	146A6

STD: Standard - HD: Heavy Duty

Ø 30"	Tire size	RIM		S.W. (mm)	O.D. (mm)	SLR (mm)	RC (mm)	Version	PR	Type	LI/SS
		Rec.	Alt.								
	16.9 - 30	W 15 L	W 14 L	429	1485	678	4535	STD	16	TT	149A6
	18.4 - 30	W 16 L	W 15 L	460	1545	697	4712	STD	8	TT	139A6
	18.4 - 30	W 16 L	W 15 L	460	1545	697	4712	HD	8	TT	139A6
	18.4 - 30	W 16 L	W 15 L	460	1545	697	4712	STD	10	TT	145A6
	18.4 - 30	W 16 L	W 15 L	460	1545	697	4712	HD	10	TT	145A6
	18.4 - 30	W 16 L	W 15 L	460	1545	697	4712	HD	10	TL	145A6
	18.4 - 30	W 16 L	W 15 L	460	1545	697	4712	STD	12	TT	149A6
	18.4 - 30	W 16 L	W 15 L	460	1545	697	4712	STD	12	TL	149A6
	18.4 - 30	W 16 L	W 15 L	460	1545	697	4712	HD	12	TT	149A6
	18.4 - 30	W 16 L	W 15 L	460	1545	697	4712	STD	14	TT	151A6
	18.4 - 30	W 16 L	W 15 L	460	1545	697	4712	STD	16	TT	154A6
	23.1 - 30	DW 20 B ; DW 20 A	-	600	1700	780	4998	STD	8	TT	146A6
	23.1 - 30	DW 20 B ; DW 20 A	-	600	1700	780	4998	STD	8	TL	146A6
	23.1 - 30	DW 20 B ; DW 20 A	-	600	1700	780	4998	STD	12	TT	155A6
	23.1 - 30	DW 20 B ; DW 20 A	-	600	1700	780	4998	STD	12	TL	155A6

STD: Standard - DB: Dual Bead - HD: Heavy Duty



Bias



# TR 135

TR 135 is best suitable for tractors in soil tillage applications. Its reinforced casing and the special cut-and-chip resistance compound provide an extended tire life-cycle. Traction, self-cleaning properties and load capacity are key features which make the TR 135 tire the ideal partner even on the most difficult ground conditions.

### Technologies



Special Compound



Reinforced Carcass

### Performance



Traction



High Load Capacity



Self-Cleaning



Durability



Cut and Chip Resistance



Ø 30"	Tire size	RIM		S.W. (mm)	O.D. (mm)	SLR (mm)	RC (mm)	Version	PR	Type	LI/SS
		Rec.	Alt.								
	23.1 - 30	DW 20 B ; DW 20 A	-	600	1700	780	4998	DB	12	TT	155 A6
	23.1 - 30	DW 20 B ; DW 20 A	-	600	1700	780	4998	DB	18	TT	164 A6
	23.1 - 30	DW 20 B ; DW 20 A	-	600	1700	780	4998	DB	18	TL	164 A6
Ø 32"	8.3 - 32	W 7	W 6	211	1195	572	3585	STD	6	TT	105 A6
	8.3 - 32	W 7	W 6	211	1195	572	3585	STD	8	TT	111 A6
	9.5 - 32	W 8	W 7	235	1255	594	3686	STD	6	TT	110 A6
	12.4 - 32	W 11	W 9 ; W 10	325	1360	639	3998	STD	6	TT	119 A6
	12.4 - 32	W 11	W 9 ; W 10	325	1360	639	3998	STD	8	TT	124 A6
	12.4 - 32	W 11	W 9 ; W 10	325	1360	639	3998	HD	8	TT	124 A6
	12.4 - 32	W 11	W 9 ; W 10	325	1360	639	3998	HD	10	TT	128 A6
Ø 34"	16.9 - 34	W 15 L	W 14 L	429	1585	728	4794	STD	8	TT	139 A6
	16.9 - 34	W 15 L	W 14 L	429	1585	728	4794	HD	8	TT	139 A6
	16.9 - 34	W 15 L	W 14 L	429	1585	728	4794	STD	10	TT	142 A6
	16.9 - 34	W 15 L	W 14 L	429	1585	728	4794	HD	10	TT	142 A6
	16.9 - 34	W 15 L	W 14 L	429	1585	728	4794	STD	12	TT	144 A6

STD: Standard - DB: Dual Bead - HD: Heavy Duty

Ø 34"	Tire size	RIM		S.W. (mm)	O.D. (mm)	SLR (mm)	RC (mm)	Version	PR	Type	LI/SS
		Rec.	Alt.								
	16.9 - 34	W 15 L	W 14 L	429	1585	728	4794	HD	12	TT	144 A6
	18.4 - 34	W 16 L	W 15 L	467	1650	751	5009	STD	6	TT	137 A6
	18.4 - 34	W 16 L	W 15 L	467	1650	751	5009	STD	8	TT	142 A6
	18.4 - 34	W 16 L	W 15 L	467	1650	751	5009	HD	8	TT	142 A6
	18.4 - 34	W 16 L	W 15 L	467	1650	751	5009	STD	10	TT	146 A6
	18.4 - 34	W 16 L	W 15 L	467	1650	751	5009	HD	10	TT	146 A6
	18.4 - 34	W 16 L	W 15 L	467	1650	751	5009	STD	12	TT	151 A6
	18.4 - 34	W 16 L	W 15 L	467	1650	751	5009	HD	12	TT	151 A6
	18.4 - 34	W 16 L	W 15 L	467	1650	751	5009	HD SPL	12	TT	151 A6
	18.4 - 34	W 16 L	W 15 L	467	1650	751	5009	STD	14	TT	154 A6
	18.4 - 34	W 16 L	W 15 L	467	1650	751	5009	HD	14	TT	154 A6
	23.1 - 34	DW 20 B ; DW 20 A	-	585	1810	834	5321	STD	10	TT	153 A6
	23.1 - 34	DW 20 B ; DW 20 A	-	585	1810	834	5321	STD	10	TL	153 A6
Ø 36"	8.3 - 36	W 7	W 6	211	1295	628	4028	STD	6	TT	107 A6
	8.3 - 36	W 7	W 6	211	1295	628	4028	STD	8	TT	113 A6

STD: Standard - HD: Heavy Duty - HD SPL: Heavy Duty Special



Bias



# TR 135

TR 135 is best suitable for tractors in soil tillage applications. Its reinforced casing and the special cut-and-chip resistance compound provide an extended tire life-cycle. Traction, self-cleaning properties and load capacity are key features which make the TR 135 tire the ideal partner even on the most difficult ground conditions.

### Technologies

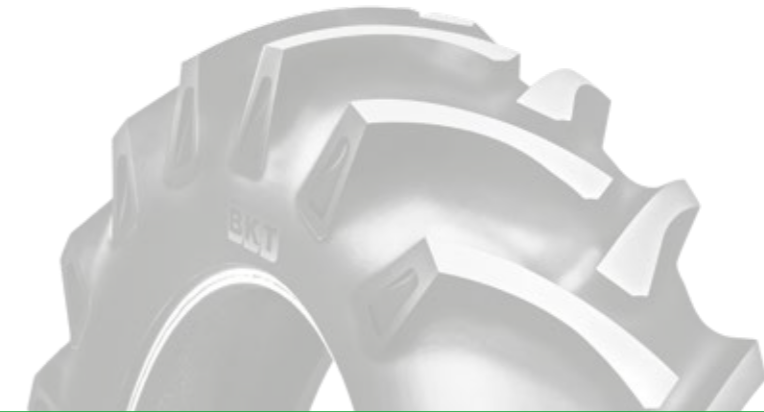


### Performance



Ø 36"	Tire size	RIM		S.W. (mm)	O.D. (mm)	SLR (mm)	RC (mm)	Version	PR	Type	LI/SS
		Rec.	Alt.								
	9.5 - 36	W 8	W 7	235	1360	646	4000	STD	10	TT	122 A6
	12.4 - 36	W 11	W 9; W 10	325	1475	696	4546	STD	8	TT	126 A6
	12.4 - 36	W 11	W 9; W 10	325	1475	696	4546	HD	8	TT	126 A6
	12.4 - 36	W 11	W 9; W 10	325	1475	696	4546	STD	10	TT	131 A6
	12.4 - 36	W 11	W 9; W 10	325	1475	696	4546	HD	10	TT	131 A6
	12.4 - 36	W 11	W 9; W 10	325	1475	696	4546	STD	12	TT	135 A6
	12.4 - 36	W 11	W 9; W 10	325	1475	696	4546	STD	14	TT	139 A6
	12.4 - 36	W 11	W 9; W 10	325	1475	696	4546	HD	14	TL	139 A6
	12.4 - 36	W 11	W 9; W 10	325	1475	696	4546	HD	14	TT	139 A6
	13.6 - 36	W 12	W 11	345	1515	713	4454	STD	6	TT	125 A6
	13.6 - 36	W 12	W 11	345	1515	713	4454	STD	8	TT	129 A6
	13.6 - 36	W 12	W 11	345	1515	713	4454	STD	10	TT	134 A6
	13.6 - 36	W 12	W 11	345	1515	713	4454	HD	10	TT	134 A6
Ø 38"	12.4 - 38	W 11	W 9; W 10	315	1525	718	4670	STD	8	TT	127 A6
	12.4 - 38	W 11	W 9; W 10	315	1525	718	4670	STD	14	TT	138 A6

STD: Standard - HD: Heavy Duty



Ø 38"	Tire size	RIM		S.W. (mm)	O.D. (mm)	SLR (mm)	RC (mm)	Version	PR	Type	LI/SS
		Rec.	Alt.								
	12.4 - 38	W 11	W 9; W 10	315	1525	718	4670	STD	14	TL	138 A6
	13.6 - 38	W 12	W 11	345	1565	735	4832	STD	8	TT	131 A6
	13.6 - 38	W 12	W 11	345	1565	735	4832	HD	8	TT	131 A6
	13.6 - 38	W 12	W 11	345	1565	735	4832	STD	12	TT	139 A6
	13.6 - 38	W 12	W 11	345	1565	735	4832	HD	12	TT	139 A6
	13.6 - 38	W 12	W 11	345	1565	735	4832	STD	14	TT	142 A6
	14.00 - 38	W 12	W 11	345	1565	735	4832	STD	8	TT	131 A6
	14.00 - 38	W 12	W 11	345	1565	735	4832	SPL	12	TT	139 A6
	15.5 - 38	W 14 L	-	395	1585	746	4660	STD	8	TT	133 A6
	15.5 - 38	W 14 L	-	395	1585	746	4660	HD	8	TT	133 A6
	15.5 - 38	W 14 L	-	395	1585	746	4660	HD	8	TL	133 A6
	15.5 - 38	W 14 L	-	395	1585	746	4660	STD	10	TT	138 A6
	15.5 - 38	W 14 L	-	395	1585	746	4660	HD	10	TT	138 A6
	15.5 - 38	W 14 L	-	395	1585	746	4660	STD	12	TT	141 A6
	16.9 - 38	W 15 L	W 14 L	429	1685	788	4954	STD	8	TT	141 A6

STD: Standard - HD: Heavy Duty - SPL: Special



Bias



# TR 135

TR 135 is best suitable for tractors in soil tillage applications. Its reinforced casing and the special cut-and-chip resistance compound provide an extended tire life-cycle. Traction, self-cleaning properties and load capacity are key features which make the TR 135 tire the ideal partner even on the most difficult ground conditions.

### Technologies



### Performance



Ø 38"	Tire size	RIM		S.W. (mm)	O.D. (mm)	SLR (mm)	RC (mm)	Version	PR	Type	LI/SS
		Rec.	Alt.								
	16.9 - 38	W 15 L	W 14 L	429	1685	788	4954	HD	8	TT	141 A6
	16.9 - 38	W 15 L	W 14 L	429	1685	788	4954	STD	10	TT	143 A6
	16.9 - 38	W 15 L	W 14 L	429	1685	788	4954	HD	10	TT	143 A6
	16.9 - 38	W 15 L	W 14 L	429	1685	788	4954	STD	12	TT	146 A6
	18.4 - 38	W 16 L	W 15 L	467	1750	816	5145	STD	8	TT	143 A6
	18.4 - 38	W 16 L	W 15 L	467	1750	816	5145	HD	8	TT	143 A6
	18.4 - 38	W 16 L	W 15 L	467	1750	816	5145	HD	10	TT	148 A6
	18.4 - 38	W 16 L	W 15 L	467	1750	816	5145	HD	10	TL	148 A6
	18.4 - 38	W 16 L	W 15 L	467	1750	816	5145	STD	12	TT	153 A6
	18.4 - 38	W 16 L	W 15 L	467	1750	816	5145	STD	12	TL	153 A6
	18.4 - 38	W 16 L	W 15 L	467	1750	816	5145	HD	12	TT	153 A6
	20.8 - 38	W 18 L	W 16 L	530	1835	852	5395	STD	8	TT	148 A6
	20.8 - 38	W 18 L	W 16 L	530	1835	852	5395	STD	12	TT	156 A6

STD: Standard - HD: Heavy Duty

Ø 38"	Tire size	RIM		S.W. (mm)	O.D. (mm)	SLR (mm)	RC (mm)	Version	PR	Type	LI/SS
		Rec.	Alt.								
	20.8 - 38	W 18 L	W 16 L	530	1835	852	5395	STD	12	TL	156 A6
	20.8 - 38	W 18 L	W 16 L	530	1835	852	5395	HD	12	TT	156 A6
	20.8 - 38	W 18 L	W 16 L	530	1835	852	5395	STD	14	TT	160 A6
	20.8 - 38	W 18 L	W 16 L	530	1835	852	5395	DB HD	16	TT	163 A6
	20.8 - 38	W 18 L	W 16 L	530	1835	852	5395	DB HD	18	TT	166 A6
	20.8 - 38	W 18 L	W 16 L	530	1835	852	5395	DB HD	18	TL	166 A6

Ø 42"	Tire size	R	Alt.	S.W. (mm)	O.D. (mm)	SLR (mm)	RC (mm)	Version	PR	Type	LI/SS
	12.4 - 42	W 10 ; W 10 A	-	322	1630	770	5011	STD	10	TL	134 A6
	20.8 - 42	W 18 L	W 16 L	535	1950	909	5733	STD	12	TT	158 A6
	20.8 - 42	W 18 L	W 16 L	535	1950	909	5733	STD	12	TL	158 A6
	20.8 - 42	W 18 L	W 16 L	535	1950	909	5733	STD	16	TL	165 A6
	20.8 - 42	W 18 L	W 16 L	535	1950	909	5733	DB HD	18	TL	168 A6

STD: Standard - DB HD: Dual Bead HD



Bias



# TR 136

TR 136 has been developed by BKT to equip tractors and trailers in soil tillage and haulage operations. This tire provides improved traction in all working conditions along with best cut and chip resistance to reduce machine downtime and increase your productivity. Thanks to the increased number of lugs, TR 136 provides outstanding traction even at high loads.

### Technologies



More Lugs



Special Compound

### Performance



Durability



High Load Capacity



Traction



Cut and Chip Resistance

Ø 26"	Tire size	RIM		S.W. (mm)	O.D. (mm)	SLR (mm)	RC (mm)	Version	PR	Type	LI/SS
		Rec.	Alt.								
	18.4 - 26	W 16 L	W 15 L	480	1450	646	4205	STD	12	TL	146 A6
	18.4 - 26	W 16 L	W 15 L	480	1450	646	4205	STD	12	TT	146 A6
	18.4 - 26	W 16 L	W 15 L	480	1450	646	4205	SPL	12	TL	146 A6
	18.4 - 26	W 16 L	W 15 L	480	1450	646	4205	STD	14	TL	150 A6
Ø 28"	12.4 - 28	W 11	W 9; W 10	315	1275	595	3749	STD	8	TT	123 A6
Ø 30"	16.9 - 30	W 15 L	W 14 L	429	1485	677	4455	STD	8	TT	137 A6
	16.9 - 30	W 15 L	W 14 L	429	1485	677	4455	HD	8	TT	137 A6
	16.9 - 30	W 15 L	W 14 L	429	1485	677	4455	SPL	8	TT	137 A6
	16.9 - 30	W 15 L	W 14 L	429	1485	677	4455	STD	10	TT	139 A6

STD: Standard - SPL: Special - HD: Heavy Duty



Ø 30"	Tire size	RIM		S.W. (mm)	O.D. (mm)	SLR (mm)	RC (mm)	Version	PR	Type	LI/SS
		Rec.	Alt.								
	16.9 - 30	W 15 L	W 14 L	429	1485	677	4455	STD	12	TT	143 A6
	16.9 - 30	W 15 L	W 14 L	429	1485	677	4455	SPL	12	TT	143 A6
	16.9 - 30	W 15 L	W 14 L	429	1485	677	4455	SPL	12	TL	143 A6
	16.9 - 30	W 15 L	W 14 L	429	1485	677	4455	STD	14	TT	146 A6
	18.4 - 30	W 16 L	W 15 L	465	1545	712	4719	STD	8	TT	139 A6
	18.4 - 30	W 16 L	W 15 L	465	1545	712	4719	HD	8	TT	139 A6
	18.4 - 30	W 16 L	W 15 L	465	1545	712	4719	HD	12	TT	149 A6
	18.4 - 30	W 16 L	W 15 L	465	1545	712	4719	SPL	12	TT	149 A6
	18.4 - 30	W 16 L	W 15 L	465	1545	712	4719	HD	14	TT	151 A6

STD: Standard - SPL: Special - HD: Heavy Duty





Bias



# TR 144

TR 144 is suitable to equip small tractors to be used in soil tillage operations. TR 144 ensures outstanding performance in all operating conditions which require excellent traction with high loads. It is also available in a "special" version, which is best suitable for heavy-duty service.

### Performance



High Load Capacity



Traction

Ø 16"	Tire size	RIM		S.W. (mm)	O.D. (mm)	SLR (mm)	RC (mm)	Version	PR	Type	LI/SS
		Rec.	Alt.								
	7 - 16	6 L; 6 LB; 6.00 F	-	183	740	344	2223	STD	4	TT	75 A6
	7 - 16	6 L; 6 LB; 6.00 F	-	183	740	344	2223	STD	4	TL	75 A6
	7 - 16	6 L; 6 LB; 6.00 F	-	183	740	344	2223	STD	6	TT	84 A6
	8 - 16	6 L; 6 LB; 6.00 F	-	200	785	358	2342	STD	4	TT	83 A6
	8 - 16	6 L; 6 LB; 6.00 F	-	200	785	358	2342	HD	4	TT	83 A6
	8 - 16	6 L; 6 LB; 6.00 F	-	200	785	358	2342	STD	6	TT	91 A6
	8 - 16	6 L; 6 LB; 6.00 F	-	200	785	358	2342	STD	6	TL	91 A6
	8 - 16	6 L; 6 LB; 6.00 F	-	200	785	358	2342	SPL	6	TT	91 A6
	8 - 16	6 L; 6 LB; 6.00 F	-	200	785	358	2342	STD	8	TT	98 A6
	9.5 - 16	W 8 L	8 LB	245	850	388	2558	STD	6	TT	96 A6
	9.5 - 16	W 8 L	8 LB	245	850	388	2558	STD	6	TL	96 A6

STD: Standard - SPL: Special - HD: Heavy Duty



Ø 16"	Tire size	RIM		S.W. (mm)	O.D. (mm)	SLR (mm)	RC (mm)	Version	PR	Type	LI/SS
		Rec.	Alt.								
	9.5 - 16	W 8 L	8 LB	245	850	388	2558	STD	8	TT	102 A6
	9.5 - 16	W 8 L	8 LB	245	850	388	2558	STD	8	TL	102 A6
Ø 18"	Tire size	RIM		S.W. (mm)	O.D. (mm)	SLR (mm)	RC (mm)	Version	PR	Type	LI/SS
		Rec.	Alt.								
	8 - 18	W 6	W 7; 5.50 F	200	840	385	2509	STD	4	TT	85 A6
	8 - 18	W 6	W 7; 5.50 F	200	840	385	2509	STD	6	TT	94 A6
	8 - 18	W 6	W 7; 5.50 F	200	840	385	2509	HD	6	TT	94 A6
	8 - 18	W 6	W 7; 5.50 F	200	840	385	2509	SPL	6	TT	94 A6
	8 - 18	W 6	W 7; 5.50 F	200	840	385	2509	STD	8	TT	100 A6
	8 - 18	W 6	W 7; 5.50 F	200	840	385	2509	SPL	8	TT	100 A6
Ø 20"	Tire size	RIM		S.W. (mm)	O.D. (mm)	SLR (mm)	RC (mm)	Version	PR	Type	LI/SS
		Rec.	Alt.								
	8.3 - 20	W 7	W 6	211	890	414	2670	STD	6	TT	96 A6
	8.3 - 20	W 7	W 6	211	890	414	2670	HD	6	TT	96 A6
Ø 22"	Tire size	RIM		S.W. (mm)	O.D. (mm)	SLR (mm)	RC (mm)	Version	PR	Type	LI/SS
		Rec.	Alt.								
	9.5 - 22	W 7	W 8	235	1000	464	3008	STD	6	TT	104 A6

STD: Standard - SPL: Special - HD: Heavy Duty







Bias



# TR 171

TR 171 is a deep tread tire suitable for tractors in soil tillage operations. Thanks to its outstanding self-cleaning properties, it is ideal for wet and moist soil. Designed with a special compound, TR 171 provides excellent traction and extraordinary durability also in the harshest operating conditions.

### Technologies



### Performance



Ø 12"	Tire size	RIM		S.W. (mm)	O.D. (mm)	SLR (mm)	RC (mm)	Version	PR	Type	LI/SS
		Rec.	Alt.								
Ø 12"	5.00 - 12	3.00 D DT; 3.00 D	4 JA; 3.50 B	130	580	271	1731	STD	4	TT	61 A6
	5.00 - 12	3.00 D DT; 3.00 D	4 JA; 3.50 B	130	580	271	1731	STD	6	TT	67 A6
	6.00 - 12	4.00 E DT; 4.00 E	4 JA	160	635	293	1901	STD	6	TT	76 A6
Ø 16"	9.5 - 16	W 8 L	8 LB	241	845	392	2499	STD	6	TT	96 A6
Ø 18"	8 - 18	W 6	W 7; 5.50 F	190	845	390	2438	STD	4	TT	85 A6
	8 - 18	W 6	W 7; 5.50 F	190	845	390	2438	STD	6	TT	94 A6
	8 - 18	W 6	W 7; 5.50 F	190	845	390	2438	STD	8	TT	100 A6
	9.5 - 18	W 8	-	241	900	417	2646	STD	8	TT	105 A6
Ø 20"	8.3 - 20	W 7	W 6	200	895	419	2608	STD	6	TT	96 A6
	8.3 - 20	W 7	W 6	200	895	419	2608	HD	6	TT	96 A6
	8.3 - 20	W 7	W 6	200	895	419	2608	STD	8	TT	101 A6
	8.3 - 20	W 7	W 6	200	895	419	2608	HD	8	TT	101 A6
	9.5 - 20	W 8	W 7	235	950	449	2942	STD	6	TT	101 A6
	9.5 - 20	W 8	W 7	235	950	449	2942	STD	8	TT	107 A6
	9.5 - 20	W 8	W 7	235	950	449	2942	HD	8	TT	107 A6

STD: Standard - HD: Heavy Duty



Ø 20"	Tire size	RIM		S.W. (mm)	O.D. (mm)	SLR (mm)	RC (mm)	Version	PR	Type	LI/SS
		Rec.	Alt.								
Ø 20"	11.2 - 20	W 10	W 9; 9	285	1005	465	3000	STD	8	TT	113 A6
	11.2 - 20	W 10	W 9; 9	285	1005	465	3000	STD	10	TT	113 A6
Ø 22"	8.3 - 22	W 7	W 6	205	945	444	2778	STD	8	TT	104 A6
	9.5 - 22	W 8	W 7	235	1005	469	2955	STD	8	TT	110 A6
Ø 24"	8.3 - 24	W 7	W 6	200	1005	474	3014	STD	6	TT	100 A6
	8.3 - 24	W 7	W 6	200	1005	474	3014	STD	8	TT	105 A6
	8.3 - 24	W 7	W 6	200	1005	474	3014	HD	8	TT	105 A6
	9.5 - 24	W 8	W 7	236	1066	500	3260	STD	6	TT	106 A6
	9.5 - 24	W 8	W 7	236	1066	500	3260	STD	8	TT	111 A6
	11.2 - 24	W 10	W 9	285	1105	519	3388	STD	6	TT	110 A6
	11.2 - 24	W 10	W 9	285	1105	519	3388	STD	8	TT	116 A6
	11.2 - 24	W 10	W 9	285	1105	519	3388	STD	10	TT	120 A6
Ø 24"	12.4 - 24	W 11	W 9; W 10	315	1165	544	3557	STD	4	TT	106 A6
	12.4 - 24	W 11	W 9; W 10	315	1165	544	3557	STD	6	TT	115 A6
	12.4 - 24	W 11	W 9; W 10	315	1165	544	3557	STD	8	TT	120 A6

STD: Standard - HD: Heavy Duty



Bias



148

Technologies



Performance



# TR 171

TR 171 is a deep tread tire suitable for tractors in soil tillage operations. Thanks to its outstanding self-cleaning properties, it is ideal for wet and moist soil. Designed with a special compound, TR 171 provides excellent traction and extraordinary durability also in the harshest operating conditions.



Ø 24"	Tire size	RIM		S.W. (mm)	O.D. (mm)	SLR (mm)	RC (mm)	Version	PR	Type	LI/SS
		Rec.	Alt.								
	12.4 - 24	W 11	W 9 ; W 10	315	1165	544	3557	HD	8	TT	120 A6
	13.6 - 24	W 12	W 11	355	1210	562	3657	STD	6	TT	119 A6
	13.6 - 24	W 12	W 11	355	1210	562	3657	STD	8	TT	123 A6
	14.9 - 24	W 13	W 11 ; W 12	391	1265	575	3792	STD	6	TT	123 A6
	14.9 - 24	W 13	W 11 ; W 12	391	1265	575	3792	STD	8	TT	128 A6
Ø 26"	11.2 - 26	W 10	W 9	284	1155	540	3396	STD	8	TT	117 A6
	12.4 - 26	W 11	W 10 ; W 9	315	1210	573	3727	STD	8	TT	121 A6
	13.6 - 26	W 12	W 11	340	1270	589	3774	STD	4	TT	110 A6
	13.6 - 26	W 12	W 11	340	1270	589	3774	STD	6	TT	120 A6
	13.6 - 26	W 12	W 11	340	1270	589	3774	STD	8	TT	126 A6
	13.6 - 26	W 12	W 11	340	1270	589	3774	HD	12	TT	135 A6
Ø 28"	12.4 - 28	W 11	W 9 ; W 10	315	1260	589	3860	STD	6	TT	117 A6
	12.4 - 28	W 11	W 9 ; W 10	315	1260	589	3860	STD	8	TT	123 A6
	12.4 - 28	W 11	W 9 ; W 10	315	1260	589	3860	STD	12	TT	131 A6
	13.6 - 28	W 12	W 11	350	1300	614	4013	STD	4	TT	112 A6

STD: Standard - HD: Heavy Duty

Ø 28"	Tire size	RIM		S.W. (mm)	O.D. (mm)	SLR (mm)	RC (mm)	Version	PR	Type	LI/SS
		Rec.	Alt.								
	13.6 - 28	W 12	W 11	350	1300	614	4013	STD	6	TT	121 A6
	13.6 - 28	W 12	W 11	350	1300	614	4013	STD	8	TT	125 A6
	13.6 - 28	W 12	W 11	350	1300	614	4013	HD	8	TT	125 A6
	13.6 - 28	W 12	W 11	350	1300	614	4013	STD	12	TT	134 A6
	13.6 - 28	W 12	W 11	350	1300	614	4013	HD	12	TT	134 A6
	14.9 - 28	W 13	W 11 ; W 12	388	1370	626	4154	STD	8	TT	130 A6
	14.9 - 28	W 13	W 11 ; W 12	388	1370	626	4154	HD	8	TT	130 A6
	14.9 - 28	W 13	W 11 ; W 12	388	1370	626	4154	STD	12	TT	137 A6
	14.9 - 28	W 13	W 11 ; W 12	388	1370	626	4154	HD	12	TT	137 A6
	16.9 - 28	W 15 L	W 14 L	435	1440	663	4387	STD	8	TT	135 A6
	16.9 - 28	W 15 L	W 14 L	435	1440	663	4387	STD	12	TT	143 A6
Ø 30"	14.9 - 30	W 13	W 11 ; W 12	380	1415	659	4160	STD	8	TT	131 A6
	16.9 - 30	W 15 L	W 14 L	430	1490	687	4535	STD	8	TT	137 A6
	16.9 - 30	W 15 L	W 14 L	430	1490	687	4535	STD	12	TT	143 A6
	18.4 - 30	W 16 L	W 15 L	470	1550	710	4706	STD	10	TT	145 A6

STD: Standard - HD: Heavy Duty



Bias



148



# TR 171

TR 171 is a deep tread tire suitable for tractors in soil tillage operations. Thanks to its outstanding self-cleaning properties, it is ideal for wet and moist soil. Designed with a special compound, TR 171 provides excellent traction and extraordinary durability also in the harshest operating conditions.

### Technologies



Special Compound



Extra Deep Tread

### Performance



Traction



High Load Capacity



Durability



Self-Cleaning

Ø 32"	Tire size	RIM		S.W. (mm)	O.D. (mm)	SLR (mm)	RC (mm)	Version	PR	Type	LI/SS
		Rec.	Alt.								
	12.4 - 32	W 11	W 9; W 10	315	1370	643	4232	STD	8	TT	124 A6
Ø 34"	Tire size	RIM		S.W. (mm)	O.D. (mm)	SLR (mm)	RC (mm)	Version	PR	Type	LI/SS
		Rec.	Alt.								
	16.9 - 34	W 15 L	W 14 L	429	1585	736	4838	STD	8	TT	139 A6
	18.4 - 34	W 16 L	W 15 L	470	1655	768	4866	STD	10	TT	146 A6
Ø 36"	Tire size	RIM		S.W. (mm)	O.D. (mm)	SLR (mm)	RC (mm)	Version	PR	Type	LI/SS
		Rec.	Alt.								
	12.4 - 36	W 11	W 9; W 10	315	1470	691	4332	STD	8	TT	126 A6
	13.6 - 36	W 12	W 11	345	1520	717	4647	STD	8	TT	129 A6
Ø 38"	Tire size	RIM		S.W. (mm)	O.D. (mm)	SLR (mm)	RC (mm)	Version	PR	Type	LI/SS
		Rec.	Alt.								
		Rec.	Alt.								
	13.6 - 38	W 12	W 11	345	1585	738	4785	STD	8	TT	131 A6
	16.9 - 38	W 15 L	W 14 L	429	1685	788	4954	STD	8	TT	141 A6
	18.4 - 38	W 16 L	W 15 L	470	1760	815	5364	STD	10	TT	148 A6

STD: Standard



# FARM 2000 PLUS

FARM 2000 PLUS is an agriculture tire featuring a higher number of lugs for better performance in the fields. The deep tread provides an extended tire life and great traction, whereas the superior tread compound ensures better cut and chip resistance. FARM 2000 PLUS shows excellent self-cleaning features and specially designed lug angles making the tire particularly suitable for field and haulage applications.

Ø 28"	Tire size	RIM		S.W. (mm)	O.D. (mm)	SLR (mm)	RC (mm)	Version	PR	Type	LI/SS
		Rec.	Alt.								
	16.9 - 28	W 15 L	W 14 L	440	1435	657	4311	STD	12	TT	143 A6
	16.9 - 28	W 15 L	W 14 L	440	1435	657	4311	SPL	12	TT	143 A6

STD: Standard - SPL: Special



Bias



143

### Technologies



More Lugs

### Performance



Durability



Traction



Cut and Chip Resistance



Self-Cleaning



High Load Capacity





Bias



# FARM 2000

The FARM 2000 tire is suitable on tractors for soil tillage applications. It has been designed with a special cut-and-chip resistant compound to ensure better durability. Thanks to its strong casing, FARM 2000 offers high load capacity. It also provides great traction and self-cleaning properties.

### Technologies



Reinforced Carcass



Special Compound

### Performance



Durability



Traction



Cut and Chip Resistance



Self-Cleaning



High Load Capacity



Ø 15.3"	Tire size	RIM		S.W. (mm)	O.D. (mm)	SLR (mm)	RC (mm)	Version	PR	Type	LI/SS	
		Rec.	Alt.								Drive Wheel	Free Rolling
Ø 15.3"	260/70 - 15.3	9.00	-	265	775	349	2294	STD	-	TL	114A8	126A8
	300/80 - 15.3	9.00	-	300	890	388	2608	STD	-	TL	120A8	132A8
Ø 16"	250/80 - 16	W 8	W 7; W 9; W 8 L	240	820	369	2429	STD	-	TT	113A8	125A8
	250/80 - 16	W 8	W 7; W 9; W 8 L	240	820	369	2429	STD	-	TL	113A8	125A8
Ø 18"	8 - 18	W 6	-	195	840	390	2470	STD	4	TT	-	85A6
	8 - 18	W 6	-	195	840	390	2470	STD	6	TT	-	94A6
	250/80 - 18	W 8	W 7; W 9	240	870	394	2679	STD	-	TT	115A8	127A8
	250/80 - 18	W 8	W 7; W 9	240	870	394	2679	STD	-	TL	115A8	127A8
Ø 20"	8.3 - 20	W 7	-	210	895	431	2714	STD	4	TT	-	88A6
	8.3 - 20	W 7	-	210	895	431	2714	STD	6	TT	-	96A6
Ø 24"	8.3 - 24	W 7	W 6	211	995	473	3032	STD	6	TT	-	100A6
	8.3 - 24	W 7	W 6	211	995	473	3032	STD	8	TT	-	105A6
Ø 28"	12.4 - 28	W 11	W 9; W 10	320	1288	603	3969	STD	8	TT	-	123A6
	12.4 - 28	W 11	W 9; W 10	320	1288	603	3969	STD	10	TT	-	124A6

STD: Standard

Ø 28"	Tire size	RIM		S.W. (mm)	O.D. (mm)	SLR (mm)	RC (mm)	Version	PR	Type	LI/SS
		Rec.	Alt.								
Ø 28"	12.4 - 28	W 11	W 9; W 10	320	1288	603	3969	STD	12	TT	125A6
	13.6 - 28	W 12	W 11	345	1335	622	4080	STD	6	TT	121A6
	13.6 - 28	W 12	W 11	345	1335	622	4080	STD	8	TT	125A6
	13.6 - 28	W 12	W 11	345	1335	622	4080	STD	10	TT	127A6
	13.6 - 28	W 12	W 11	345	1335	622	4080	STD	12	TT	128A6
	13.6 - 28	W 12	W 11	345	1335	622	4080	SPL	12	TT	128A6
	14.9 - 28	W 13	W 11; W 12	385	1375	636	4194	STD	8	TT	130A6
	14.9 - 28	W 13	W 11; W 12	385	1375	636	4194	STD	10	TT	132A6
	14.9 - 28	W 13	W 11; W 12	385	1375	636	4194	STD	12	TT	134A6
	14.9 - 28	W 13	W 11; W 12	385	1375	636	4194	STD	14	TT	136A6
	16.9 - 28	W 15 L	W 14 L	429	1420	657	4351	HD	8	TT	135A6
	16.9 - 28	W 15 L	W 14 L	429	1420	657	4351	STD	12	TT	143A6
Ø 30"	18.4 - 30	W 16 L	-	470	1560	716	4776	STD	14	TT	151A6

STD: Standard - HD: Heavy Duty - SPL: Special



Bias



Technologies



Reinforced Carcass

Performance



Self-Cleaning



Traction



High Load Capacity



Cut and Chip Resistance



Durability



# FARM SPECIAL

FARM SPECIAL is a tractor tire suitable for soil tillage operations. The strong casing provides a high level of puncture resistance and a longer service life, whilst the rounded shoulders prevent soil damages ensuring the protection of the valuable crops. FARM SPECIAL features a unique tread design with special mud breakers for best self-cleaning properties. In addition, dual angled lugs provide excellent traction and reduced slippage.

Ø 24"	Tire size	RIM		S.W. (mm)	O.D. (mm)	SLR (mm)	RC (mm)	Version	PR	Type	LI/SS
		Rec.	Alt.								
	9.5 - 24	W 8	W 7	240	1050	491	3194	STD	8	TT	112 A6
	11.2 - 24	W 10	W 9	285	1095	509	3283	STD	8	TT	116 A6
	12.4 - 24	W 11	W 9; W 10	320	1155	534	3504	STD	8	TT	121 A6
	13.6 - 24	W 12	W 11	350	1205	554	3635	STD	8	TT	123 A6
	14.9 - 24	W 13	W 11; W 12	378	1255	572	3775	STD	8	TT	128 A6
Ø 28"	11.2 - 28	W 10	W 9	285	1205	563	3694	STD	8	TT	118 A6
	12.4 - 28	W 11	W 9; W 10	315	1265	589	3853	STD	8	TT	123 A6
	13.6 - 28	W 12	W 11	350	1310	610	3985	STD	8	TT	125 A6
	14.9 - 28	W 13	W 11; W 12	375	1355	620	4105	STD	8	TT	130 A6
Ø 30"	16.9 - 30	W 15 L	W 14 L	431	1469	671	4456	STD	8	TT	137 A6
	18.4 - 30	W 16 L	W 15 L	451	1533	689	4599	STD	8	TT	139 A6
Ø 32"	12.4 - 32	W 11	W 9; W 10	320	1360	634	4137	STD	8	TT	124 A6
Ø 36"	13.6 - 36	W 12	W 11	345	1515	704	4591	STD	8	TT	129 A6
Ø 38"	13.6 - 38	W 12	W 11	345	1565	736	4874	STD	8	TT	131 A6
	14.00 - 38	W 12	W 11	345	1565	736	4874	STD	8	TT	131 A6
	15.5 - 38	W 14 L	-	394	1575	731	4813	STD	8	TT	133 A6

STD: Standard



# AS 2001

AS 2001 is a bias cross-ply tire which best suits tractors in soil tillage operations. Its design provides excellent traction and self-cleaning properties. AS 2001 is made of a special cut-and-chip resistant compound that also ensures great load capacity.

Ø 26"	Tire size	RIM		S.W. (mm)	O.D. (mm)	SLR (mm)	RC (mm)	Version	PR	Type	LI/SS
		Rec.	Alt.								
	18.4 - 26	W 16 L	W 15 L	467	1475	650	4250	STD	10	TT	142 A6
	18.4 - 26	W 16 L	W 15 L	467	1475	650	4250	STD	10	TL	142 A6
	18.4 - 26	W 16 L	W 15 L	467	1475	650	4250	STD	12	TT	146 A6
	18.4 - 26	W 16 L	W 15 L	467	1475	650	4250	STD	12	TL	146 A6
	18.4 - 26	W 16 L	W 15 L	467	1475	650	4250	STD	14	TT	149 A6
Ø 28"	16.9 - 28	W 15 L	W 14 L	429	1420	651	4319	STD	8	TT	135 A6
	16.9 - 28	W 15 L	W 14 L	429	1420	651	4319	STD	10	TT	139 A6
	16.9 - 28	W 15 L	W 14 L	429	1420	651	4319	STD	12	TT	143 A6
	16.9 - 28	W 15 L	W 14 L	429	1420	651	4319	STD	12	TL	143 A6
	16.9 - 28	W 15 L	W 14 L	429	1420	651	4319	SPL	12	TT	143 A6

STD: Standard - SPL: Special



Bias



Technologies



Special Compound

Performance



Traction



High Load Capacity



Self-Cleaning



Cut and Chip Resistance





Bias



# TRAC FARM

TRAC FARM is a heavy-duty tire specifically designed for tractors in soil tillage and haulage applications. Its deep tread and the special cut-and-chip-resistant compound make the tire suitable for the most difficult operating conditions, ensuring the best return on investment during the entire product life-cycle. TRAC FARM has been designed with more lugs providing extraordinary traction and self-cleaning properties.

### Technologies



More Lugs



Extra Deep Tread

### Performance



Durability



Self-Cleaning



Traction



High Load Capacity



Cut and Chip Resistance



# TRAC FARM PLUS

TRAC FARM PLUS is a rear tractor tire specifically designed for soil tillage and haulage applications. The tire features a deeper tread with dual angle lugs to ensure both excellent traction and a comfortable ride on the road. The special tread design provides more contact for better stability and great self-cleaning properties. TRAC FARM PLUS ensures a longer tire life-cycle.



Bias



### Technologies



Larger Footprint

### Performance



Handling & Comfort



Durability



Self-Cleaning



Traction



High Load Capacity



Ø 20"	Tire size	RIM		S.W. (mm)	O.D. (mm)	SLR (mm)	RC (mm)	Version	PR	Type	LI/SS
		Rec.	Alt.								
	11.2 - 20	W 10	W 9	290	1000	463	2940	STD	8	TT	111 A6
Ø 28"	12.4 - 28	W 11	W 9; W 10	320	1295	602	3890	STD	10	TT	124 A6
	12.4 - 28	W 11	W 9; W 10	320	1295	602	3890	STD	12	TT	125 A6
	13.6 - 28	W 12	W 11	365	1345	625	4089	STD	12	TT	128 A6
	16.9 - 28	W 15 L	W 14 L	440	1435	663	4219	STD	12	TT	143 A6
Ø 30"	18.4 - 30	W 16 L	W 15 L	467	1550	716	4557	STD	12	TT	149 A6
	18.4 - 30	W 16 L	-	470	1565	716	4557	STD	14	TT	151 A6
	18.4 - 30	W 16 L	-	470	1565	716	4557	HD	14	TT	151 A6

STD: Standard - HD: Heavy Duty

Ø 28"	Tire size	RIM		S.W. (mm)	O.D. (mm)	SLR (mm)	RC (mm)	Version	PR	Type	LI/SS
		Rec.	Alt.								
	12.4 - 28	W 11	W 9; W 10	320	1295	603	3899	STD	12	TT	125 A6
	13.6 - 28	W 12	W 11	365	1345	621	4088	STD	12	TT	128 A6
	14.9 - 28	W 13	W 12; W 11	390	1380	642	4179	STD	12	TT	137 A6
	16.9 - 28	W 15 L	W 14 L	440	1435	660	4298	STD	12	TT	143 A6
Ø 30"	16.9 - 30	W 15 L	W 14 L	440	1475	679	4466	STD	12	TT	144 A6

STD: Standard





Bias



Technologies



Extra Deep Tread

Performance



Durability



Traction



Cut and Chip Resistance



Self-Cleaning



High Load Capacity



# COMMANDER (R)

COMMANDER (R) is an agricultural tire featuring a deep tread with strong lug bases for a longer tire life-cycle. The special dual-angle lug design provides excellent traction in the fields and top self-cleaning properties. The strong casing is made of a cut-and-chip-resistant compound providing better puncture resistance together with high load capacity. COMMANDER (R) is the perfect tire for soil tillage, haulage and harvesting operations.

Ø 20"	Tire size	RIM		S.W. (mm)	O.D. (mm)	SLR (mm)	RC (mm)	Version	PR	Type	LI/SS
		Rec.	Alt.								
	9.5 - 20	W 8	W 7	245	970	455	2953	STD	12	TT	109A6
Ø 24"	9.5 - 24	W 8	W 7	245	1065	507	3308	STD	12	TT	114A6
	11.2 - 24	W 10	W 9	295	1125	535	3460	STD	12	TT	123A6
	12.4 - 24	W 11	W 10	320	1185	559	3644	STD	8	TT	121A6
	12.4 - 24	W 11	W 10	320	1185	559	3644	STD	12	TT	128A6
Ø 28"	12.4 - 28	W 11	W 9; W 10	318	1285	600	3946	STD	12	TT	125A6
	13.6 - 28	W 12	W 11	355	1335	623	4068	STD	12	TT	128A6

STD: Standard



Ø 28"	Tire size	RIM		S.W. (mm)	O.D. (mm)	SLR (mm)	RC (mm)	Version	PR	Type	LI/SS
		Rec.	Alt.								
	14.9 - 28	W 13	W 11, W 12	388	1380	645	4213	STD	12	TT	134A6
	16.9 - 28	W 15 L	W 14 L	435	1435	663	4274	STD	12	TT	143A6
Ø 30"	18.4 - 30	W 16 L	-	472	1565	734	4834	STD	8	TT	139A6
	18.4 - 30	W 16 L	-	472	1565	734	4834	STD	14	TT	151A6
	18.4 - 30	W 16 L	-	472	1565	734	4834	STD	18	TT	155A6
	18.4 - 30	W 16 L	-	472	1565	734	4834	STD	18	TL	155A6

STD: Standard





Bias



# TR 270

TR 270 is a tractor tire suitable for soil tillage applications. It is specially designed for providing maximum performance on wet and moist soil. In these soil conditions, a tire is required to offer superior grip and enhanced self-cleaning features. TR 270 perfectly meets all these characteristics.

### Technologies



Extra Deep Tread

### Performance



Traction



For Muddy Ground



Self-Cleaning



Durability



Cut and Chip Resistance



Ø 26"	Tire size	RIM		S.W. (mm)	O.D. (mm)	SLR (mm)	RC (mm)	Version	PR	Type	LI/SS
		Rec.	Alt.								
	23.1 - 26	DW 20 A ; DW 20 B	-	590	1646	739	4922	STD	8	TT	145 A6
	23.1 - 26	DW 20 A ; DW 20 B	-	590	1646	739	4922	STD	10	TT	149 A6
	23.1 - 26	DW 20 A ; DW 20 B	-	590	1646	739	4922	STD	12	TT	153 A6
	23.1 - 26	DW 20 A ; DW 20 B	-	590	1646	739	4922	STD	12	TL	153 A6
	23.1 - 26	DW 20 A ; DW 20 B	-	590	1646	739	4922	STD	14	TT	156 A6
Ø 30"	18.4 - 30	DW 16 L ; DW 16 A	W 15 L ; DW 15 A	465	1580	720	4787	STD	8	TT	139 A6
	18.4 - 30	DW 16 L ; DW 16 A	W 15 L ; DW 15 A	465	1580	720	4787	STD	8	TL	139 A6
	18.4 - 30	DW 16 L ; DW 16 A	W 15 L ; DW 15 A	465	1580	720	4787	STD	12	TT	149 A6
	23.1 - 30	DW 20 A ; DW 20 B		590	1748	790	5227	STD	8	TT	146 A6
	23.1 - 30	DW 20 A ; DW 20 B	-	590	1748	790	5227	STD	10	TT	151 A6
	23.1 - 30	DW 20 A ; DW 20 B	-	590	1748	790	5227	STD	12	TT	155 A6
Ø 34"	18.4 - 34	DW 16 A ; W 16 L	W 15 L	465	1682	771	5029	STD	8	TT	142 A6

STD: Standard



Ø 34"	Tire size	RIM		S.W. (mm)	O.D. (mm)	SLR (mm)	RC (mm)	Version	PR	Type	LI/SS
		Rec.	Alt.								
	18.4 - 34	DW 16 A ; W 16 L	W 15 L	465	1682	771	5029	STD	12	TT	150 A6
	23.1 - 34	DW 20 A ; DW 20 B	-	590	1850	841	5532	STD	8	TT	148 A6
	23.1 - 34	DW 20 A ; DW 20 B	-	590	1850	841	5532	STD	10	TT	153 A6
	23.1 - 34	DW 20 A ; DW 20 B	-	590	1850	841	5532	STD	12	TT	156 A6
	23.1 - 34	DW 20 A ; DW 20 B	-	590	1850	841	5532	STD	14	TT	160 A6
Ø 38"	13.6 - 38	W 12	DW 12 A ; W 11	345	1600	-	-	STD	6	TT	122 A6
	18.4 - 38	W 16 A ; W 16 L	W 15 L ; DD 16	465	1784	822	5334	STD	8	TT	143 A6
	18.4 - 38	W 16 A ; W 16 L	W 15 L ; DD 16	465	1784	822	5334	STD	12	TT	153 A6
	20.8 - 38	W 18 A ; W 18 L	DD 18 ; DW 18 A	530	1875	841	5472	STD	8	TT	148 A6
	20.8 - 38	W 18 A ; W 18 L	DD 18 ; DW 18 A	530	1875	841	5472	STD	10	TT	151 A6
	20.8 - 38	W 18 A ; W 18 L	DD 18 ; DW 18 A	530	1875	841	5472	STD	12	TT	156 A6
Ø 46"	13.6 - 46	W 12	W 12 A	345	1804	-	-	STD	6	TT	125 A6

STD: Standard





Bias



R-2



160

Technologies



Extra Deep Tread

Performance



Traction



For Muddy Ground



Self-Cleaning



Durability



Cut and Chip Resistance



# TR 273

TR 273 is a tractor tire suitable for soil tillage and specifically designed to provide maximum performance on wet and moist soil. In these soil conditions, a tire is required to offer superior grip and enhanced self-cleaning properties. TR 273 perfectly meets all these characteristics.

Ø 24"	Tire size	RIM		S.W. (mm)	O.D. (mm)	SLR (mm)	RC (mm)	Version	PR	Type	LI/SS
		Rec.	Alt.								
	12.4 - 24	W 11	W 10	315	1195	550	3722	STD	8	TT	121 A6
	13.6 - 24	W 12	W 11	350	1240	570	3795	STD	8	TT	123 A6
	14.9 - 24	W 13	W 12	380	1310	595	4044	STD	8	TT	128 A6
	14.9 - 24	W 13	W 12	380	1310	595	4044	STD	10	TT	132 A6
Ø 26"	18.4 - 26	W 16	W 15	470	1490	673	4534	STD	12	TT	146 A6
	23.1 - 26	DW 20 A ; DW 20 B	-	590	1655	757	4998	STD	10	TT	149 A6
	23.1 - 26	DW 20 A ; DW 20 B	-	590	1655	757	4998	STD	12	TT	153 A6
	23.1 - 26	DW 20 A ; DW 20 B	-	590	1655	757	4998	STD	14	TT	156 A6
Ø 28"	14.9 - 28	W 13	W 12	380	1410	652	4405	STD	8	TT	130 A6

STD: Standard



Ø 30"	Tire size	RIM		S.W. (mm)	O.D. (mm)	SLR (mm)	RC (mm)	Version	PR	Type	LI/SS
		Rec.	Alt.								
	16.9 - 30	W 15	W 14	435	1530	705	4716	STD	12	TT	143 A6
	18.4 - 30	W 16 L	W 15 L	465	1585	723	4924	STD	12	TT	149 A6
	23.1 - 30	DW 20 A ; DW 20 B	-	590	1748	794	5356	STD	10	TT	151 A6
	23.1 - 30	DW 20 A ; DW 20 B	-	590	1748	794	5356	STD	14	TT	157 A6
Ø 34"	18.4 - 34	DW 16A	W 16 L ; W 15 L ; DW 15 L	475	1701	775	5253	STD	12	TT	150 A6
	23.1 - 34	DW 20 A ; DW 20 B	-	590	1850	833	5634	STD	10	TT	153 A6
	23.1 - 34	DW 20 A ; DW 20 B	-	590	1850	833	5634	STD	14	TT	160 A6
Ø 38"	18.4 - 38	W 16	W 15	465	1800	822	5579	STD	12	TT	152 A6

STD: Standard





# TR 318

TR 318 is specifically designed for sprayers and implement machinery. Its dual-angled lugs provide excellent traction and outstanding driving comfort. TR 318 also features extraordinary self-cleaning properties.

### Performance



Ø 12"	Tire size	RIM		S.W. (mm)	O.D. (mm)	SLR (mm)	RC (mm)	Version	PR	Type	LI/SS
		Rec.	Alt.								
	23 X 9.00 - 12	7.0	-	220	585	-	-	STD	6	TT	93A3
	26 X 10.00 - 12	8.5	-	265	675	-	-	STD	8	TT	107A3

STD: Standard



# PUDDLE SPECIAL (A)

PUDDLE SPECIAL is a R-2 agricultural tire specifically designed for operations in paddy fields. The extra deep tread design along with the special lug pattern provides best grip and excellent traction even on wet and soft soil. The wide center bar provides better adaptability for road applications and provides extraordinary service performance. In addition, PUDDLE SPECIAL shows superior self-cleaning features and excellent durability.



### Performance



Ø 28"	Tire size	RIM		S.W. (mm)	O.D. (mm)	SLR (mm)	RC (mm)	Version	PR	Type	LI/SS
		Rec.	Alt.								
	12.4 - 28	W 11	W 10	325	1385	649	4067	STD	12	TT	137A2
Ø 32"	Tire size	Rec.	Alt.	S.W. (mm)	O.D. (mm)	SLR (mm)	RC (mm)	Version	PR	Type	LI/SS
	11 - 32	W 10	W 9	305	1465	702	4384	STD	6	TT	111A2
	11 - 32	W 10	W 9	305	1465	702	4384	STD	6	TL	111A2

STD: Standard



# PUDDLE SPECIAL (B)

PUDDLE SPECIAL is a R-2 agricultural tire specifically designed for operations in paddy fields. The extra deep tread design along with the special lug pattern provides best grip and excellent traction even on wet and soft soil. The wide center bar provides better adaptability for road applications and provides extraordinary service performance. In addition, PUDDLE SPECIAL shows superior self-cleaning features and excellent durability.



### Performance



Ø 26"	Tire size	RIM		S.W. (mm)	O.D. (mm)	SLR (mm)	RC (mm)	Version	PR	Type	LI/SS
		Rec.	Alt.								
	120/90 - 26	4 JA	-	125	940	-	-	STD	6	TT	90A2
	120/90 - 26	4 JA	-	125	940	-	-	STD	6	TL	90A2

STD: Standard





Bias



Performance



Stability



Traction



# TR 459

TR 459 has been particularly designed for digging and loading operations as well as municipality and maintenance applications with tractors and backhoe loaders. It offers high stability and is available in two versions. The "special" version provides an extended tire life-cycle.

Ø 20"	Tire size	RIM		S.W. (mm)	O.D. (mm)	SLR (mm)	RC (mm)	Version	PR	Type	LI/SS
		Rec.	Alt.								
	400/70 - 20	13	12 SDC; 13 SDC; 14	410	1090	-	-	STD	-	TL	149 A8
Ø 24"	14.9 - 24	DW 13	DW 12; DW 11; DW 13 L	390	1244	562	3657	IND	8	TL	137 A8
	14.9 - 24	DW 13	DW 12; DW 11; DW 13 L	390	1244	562	3657	IND	12	TL	145 A8
	16.9 - 24	DW 15 L	DW 14 L	440	1310	590	3850	IND	8	TL	142 A8
	16.9 - 24	DW 15 L	DW 14 L	440	1310	590	3850	IND	10	TL	145 A8
	16.9 - 24	DW 15 L	DW 14 L	440	1310	590	3850	IND	12	TL	149 A8
	17.5L - 24	DW 15 L	DW 14 L	445	1270	557	3825	IND	8	TL	139 A8
	17.5L - 24	DW 15 L	DW 14 L	445	1270	557	3825	IND	10	TL	144 A8
	17.5L - 24	DW 15 L	DW 14 L	445	1270	557	3825	IND	12	TL	148 A8
	18.4 - 24	DW 16 L	DW 15 L	472	1375	610	4114	IND	12	TL	155 A8
	19.5L - 24	DW 16 L	-	490	1333	585	4031	IND	10	TL	147 A8

STD: Standard - IND: Industrial



Ø 24"	Tire size	RIM		S.W. (mm)	O.D. (mm)	SLR (mm)	RC (mm)	Version	PR	Type	LI/SS
		Rec.	Alt.								
	19.5L - 24	DW 16 L	-	490	1333	585	4031	IND	12	TL	151 A8
	19.5L - 24	DW 16 L	-	490	1333	585	4031	IND SPL	12	TL	151 A8
	21L - 24	DW 18 L	-	533	1378	605	3995	IND	12	TL	155 A8
	21L - 24	DW 18 L	-	533	1378	605	3995	STD	14	TL	157 A8
Ø 26"	18.4 - 26	DW 16 L	DW 15 L	472	1425	628	4346	IND	12	TL	156 A8
	18.4 - 26	DW 16 L	DW 15 L	472	1425	628	4346	IND	14	TL	159 A8
Ø 28"	16.9 - 28	DW 15 L	DW 14 L	440	1410	640	4145	IND	8	TL	145 A8
	16.9 - 28	DW 15 L	DW 14 L	440	1410	640	4145	IND	10	TL	148 A8
	16.9 - 28	DW 15 L	DW 14 L	440	1410	640	4145	IND	12	TL	152 A8
	18.4 - 28	DW 16 L	DW 15 L	472	1475	653	4337	IND	12	TL	157 A8
	21L - 28	DW 18 A	-	535	1480	-	-	IND	12	TL	157 A8
Ø 30"	16.9 - 30	DW 15 L	DW 14 L	440	1470	657	4484	IND	12	TL	153 A8

IND SPL: Industrial Special - STD: Standard - IND: Industrial





Bias



# TR 461

TR 461 is a BKT pattern suitable for municipality and maintenance applications with tractors as well as for loading operations with telehandlers. The sidewall protection features particular resistance against cuts and bruises providing a longer life even on hard surfaces in addition to excellent stability.

### Performance



Road Oriented



Cut and Chip Resistance



Durability



Stability

Ø 18"	Tire size	RIM		S.W. (mm)	O.D. (mm)	SLR (mm)	RC (mm)	Version	PR	Type	LI/SS
		Rec.	Alt.								
	12.5/80 - 18	W 9	11	305	987	435	2902	STD	12	TL	-
Ø 24"	16.9 - 24	DW 15 L	DW 14 L	440	1280	566	3763	STD	14	TL	151A8
	19.5L - 24	DW 16 L	-	490	1310	578	3851	STD	12	TL	151A8
	19.5L - 24	DW 16 L	-	490	1310	578	3851	STD	14	TL	154A8
	21L - 24	DW 18 L	-	540	1385	607	4072	STD	14	TL	157A8
Ø 28"	16.9 - 28	DW 15 L	DW 14 L	440	1390	620	4087	STD	14	TL	154A8

STD: Standard



# TR 463

TR 463 has been specially designed for backhoe loaders and industrial tractors. Made of a superior tread compound and featuring a strong nylon casing, this tire stands for best results in industrial and OTR applications, and on construction sites. TR 463 provides excellent traction for drive wheels.



Bias



### Performance



Traction

Ø 24"	Tire size	RIM		S.W. (mm)	O.D. (mm)	SLR (mm)	RC (mm)	Version	PR	Type	LI/SS
		Rec.	Alt.								
	16.9 - 24	DW 15 L	DW 14 L	445	1300	584	3877	IND	12	TL	149A8
Ø 26"	18.4 - 26	DW 16 L	DW 15 L	480	1425	637	4215	IND	12	TL	156A8
Ø 28"	16.9 - 28	DW 15 L	DW 14 L	450	1405	636	4190	IND	12	TL	152A8

IND: Industrial





# AT 316

AT 316 is suitable for compact utility tractors in municipality and maintenance applications. The special tread design provides excellent traction without compromising field protection - an essential feature for this kind of application. AT 316 is also available as "aramid-belted" version to provide increased puncture resistance.

Ø 12"	Tire size	RIM		S.W. (mm)	O.D. (mm)	SLR (mm)	RC (mm)	Version	PR	Type	LI/SS
		Rec.	Alt.								
	24 X 12.00 - 12	10.50 I - 55; I - 70; I - 90	-	315	610	271	1769	STD	4	TL	-
	24 X 12.00 - 12	10.50 I - 55; I - 70; I - 90	-	315	610	271	1769	AB	6	TL	-

STD: Standard - AB: Aramid Belted



# TR 393

TR 393 has been specially designed for hay balers, spreaders and implement machinery on and off the road. The special tread design provides best flotation and self-cleaning properties in addition to a long service life. Thanks to its large contact area, TR 393 ensures excellent traction and minimizes soil compaction.

Ø 16"	Tire size	RIM		S.W. (mm)	O.D. (mm)	SLR (mm)	RC (mm)	Version	PR	Type	LI/SS
		Rec.	Alt.								
	16.5L-16.1SL	W 14 C	W 14 CH	420	1025	461	2966	STD	6	TL	128A8

STD: Standard



### Performance



Traction



Self-Cleaning



Bias



### Performance



Excellent Flotation



Self-Cleaning



Traction



Reduced Soil Compaction





Bias



# STAR TRAC

STAR TRAC is the BKT tire for harvesters at cotton farms, which is able to support heavy loads. Thanks to its particularly deep tread design, it ensures both excellent traction in the fields and excellent performance during road transfers. On cotton plantations showing the typical middle-sized shrubs, harvesting demands tire features like excellent flotation and reduced soil compaction. Moreover, the tire is made of a special compound providing high resistance against cuts and typical damages of this application.

### Performance



High Load Capacity



High Puncture Resistance

Ø 32"	Tire size	RIM		S.W. (mm)	O.D. (mm)	SLR (mm)	RC (mm)	Version	PR	Type	LI/SS
		Rec.	Alt.								
	DW 500/95 D 32	13.00 DW	-	500	1836	809	5324	STD	8	TL	62 A8/169 A5
	VA 500/95 D 32	13.00 VA	-	500	1836	809	5324	STD	20	TL	179 A8/186 A5

STD: Standard



# TR 137

TR 137 is BKT's most suitable tire for all harvesting operations. It ensures excellent traction in the fields even with high loads. The tire is available in different versions: the "aramid-belted" version provides better puncture resistance and protection against all typical damages of this application; the "HD" version provides extraordinary cut and chip resistance, and an extended tire life-cycle.

Ø 32"	Tire size	RIM		S.W. (mm)	O.D. (mm)	SLR (mm)	RC (mm)	Version	PR	Type	LI/SS
		Rec.	Alt.								
	24.5 - 32	DW 21 B	DW 20 B	622	1805	807	5343	STD	12	TL	159 A6
	24.5 - 32	DW 21 B	DW 20 B	622	1805	807	5343	STD	14	TL	163 A6
	30.5L - 32	DH 27 B	DW 27 B	770	1865	831	5520	STD	12	TL	162 A6
	30.5L - 32	DH 27 B	DW 27 B	770	1865	831	5520	STD	14	TL	164 A6
	30.5L - 32	DH 27 B	DW 27 B	770	1865	831	5520	STD	16	TL	167 A6
	30.5L - 32	DH 27 B	DW 27 B	770	1865	831	5520	AB	18	TL	170 A6
	30.5L - 32	DH 27 B	DW 27 B	770	1865	831	5520	HD	18	TL	170 A6

STD: Standard - AB: Aramid Belted - HD: Heavy Duty



Bias



### Technologies



Aramid Belted



Heavy Duty

### Performance



High Load Capacity



Traction



Durability



Self-Cleaning



Stubble Resistance



Cut and Chip Resistance





Bias



# TR 360

TR 360 is suitable for implement machinery in on-and-off-the-road transport and lawn and garden applications. The particular tread design along with the casing structure ensures a long tire life-cycle.

Performance



Durability

Ø 8"	Tire size	RIM		S.W. (mm)	O.D. (mm)	SLR (mm)	RC (mm)	Version	PR	Type	LI/SS
		Rec.	Alt.								
	<b>18 X 7 - 8</b>	5.5	-	180	460	202	1334	STD	6	TL	-

STD: Standard



# TR 882

TR 882 is a very versatile tire suitable for several applications and vehicles. It has been designed to fit implement machinery, hay harvesters/balers and sugar cane machineries. Engineered with a special compound to reduce damages, this tire features also great durability and traction in every field condition. TR 882 is also available as "aramid-belted", "HD" and "special" versions to meet specific end user requirements.

Ø 15.5"	Tire size	RIM		S.W. (mm)	O.D. (mm)	SLR (mm)	RC (mm)	Version	PR	Type	LI/SS	
		Rec.	Alt.								Drive Wheel	Free Rolling
	<b>400/60 - 15.5</b>	AG 13.00	-	400	875	380	2564	STD	8	TL	122 A8	134 A8
	<b>400/60 - 15.5</b>	AG 13.00	-	400	875	380	2564	STD	14	TL	132 A8	145 A8
	<b>400/60 - 15.5</b>	AG 13.00	-	400	875	380	2564	AB	14	TL	132 A8	145 A8
	<b>400/60 - 15.5</b>	AG 13.00	-	400	875	380	2564	HD	14	TL	132 A8	145 A8
	<b>400/60 - 15.5</b>	AG 13.00	-	400	875	380	2564	SPL	14	TL	132 A8	145 A8
	<b>400/60 - 15.5</b>	AG 13.00	-	400	875	380	2564	STD	18	TL	137 A8	149 A8
	<b>400/60 - 15.5</b>	AG 13.00	-	400	875	380	2564	AB	18	TL	137 A8	149 A8
	<b>400/60 - 15.5</b>	AG 13.00	-	400	875	380	2564	HD	18	TL	137 A8	149 A8
	<b>400/60 - 15.5</b>	AG 13.00	-	400	875	380	2564	SPL	18	TL	137 A8	149 A8

STD: Standard - AB: Aramid Belted - HD: Heavy Duty - SPL: Special



Bias



Technologies



Special Compound



Aramid Belted



Heavy Duty

Performance



Cut and Chip Resistance



Stubble Resistance



Durability



Traction





Bias



# FLOTATION 558

FLOTATION 558 is a cross-ply flotation tire suitable for hay harvesters/balers, tankers and trailers both on and off the road. It is particularly recommended whenever traction is essential for good soil tillage in addition to high load capacity.

### Performance



High Load Capacity



Durability



Traction

Ø 22.5"	Tire size	RIM		S.W. (mm)	O.D. (mm)	SLR (mm)	RC (mm)	Version	PR	Type	LI/SS	
		Rec.	Alt.								Drive Wheel	Free Rolling
	400/55 - 22.5	AG 11.75	12.25; 13.00; AG 13.00	405	1020	445	3084	STD	14	TL	138 A8/134 B	150 A8/146 B
	400/55 - 22.5	AG 11.75	12.25; 13.00; AG 13.00	405	1020	445	3084	STD	16	TL	140 A8/136 B	152 A8/148 B
	400/55 - 22.5	AG 11.75	12.25; 13.00; AG 13.00	405	1020	445	3084	AB HD	16	TL	140 A8/136 B	152 A8/148 B
	400/55 - 22.5	AG 11.75	12.25; 13.00; AG 13.00	405	1020	445	3084	STD	20	TL	144 A8/140 B	156 A8/152 B

STD: Standard - AB HD: Aramid Belted HD



Ø 22.5"	Tire size	RIM		S.W. (mm)	O.D. (mm)	SLR (mm)	RC (mm)	Version	PR	Type	LI/SS	
		Rec.	Alt.								Drive Wheel	Free Rolling
	500/45 - 22.5	AG 16.00	-	500	1045	471	3167	STD	12	TL	136 A8/132 B	148 A8/144 B
	500/45 - 22.5	AG 16.00	-	500	1045	471	3167	STD	16	TL	142 A8/138 B	154 A8/150 B
	500/45 - 22.5	AG 16.00	-	500	1045	471	3167	AB HD	16	TL	142 A8/138 B	154 A8/150 B
	500/45 - 22.5	AG 16.00	-	500	1045	471	3167	STD	20	TL	146 A8/142 B	158 A8/154 B

STD: Standard - AB HD: Aramid Belted HD







Bias



Performance



Steering Control



# TF 8181

TF 8181 is a field and road tire designed for 2WD tractors in soil tillage and haulage applications. This tire provides excellent steering performance.

Ø 15"	Tire size	RIM		S.W. (mm)	O.D. (mm)	SLR (mm)	RC (mm)	Version	PR	Type	LI/SS
		Rec.	Alt.								
	4.00 - 15	3.00 D	4 J	112	605	287	1834	STD	4	TT	66 A6
	5.00 - 15	4.00 E	3.00 D; 4 J; 4½ J	142	655	307	1951	STD	4	TT	73 A6
	5.00 - 15	4.00 E	3.00 D; 4 J; 4½ J	142	655	307	1951	STD	6	TT	82 A6
	5.00 - 15	4.00 E	3.00 D; 4 J; 4½ J	142	655	307	1951	SPL	6	TT	82 A6
Ø 16"	Tire size	Rec.	Alt.	S.W. (mm)	O.D. (mm)	SLR (mm)	RC (mm)	Version	PR	Type	LI/SS
	4.00 - 16	3.00 D	-	112	630	301	1877	STD	4	TT	69 A6
	4.50 - 16	3.00 D	-	122	655	311	1952	STD	4	TT	73 A6
	5.00 - 16	4.00 E	3.00 D; 4 J; 4½ J	140	680	322	2025	STD	4	TT	76 A6
	5.00 - 16	4.00 E	3.00 D; 4 J; 4½ J	140	680	322	2025	STD	6	TT	84 A6
	5.00 - 16	4.00 E	3.00 D; 4 J; 4½ J	140	680	322	2025	SPL	6	TT	84 A6
	5.50 - 16	4.00 E	3.50 D; 4.50 E	158	720	340	2145	STD	6	TT	86 A6
	5.50 - 16	4.00 E	3.50 D; 4.50 E	158	720	340	2145	SPL	6	TT	86 A6
	6.00 - 16	4.50 E	4.00 E; 5 K; 5.00 F	170	745	350	2220	STD	6	TT	88 A6
	6.00 - 16	4.50 E	4.00 E; 5 K; 5.00 F	170	745	350	2220	SPL	6	TT	88 A6
	6.00 - 16	4.50 E	4.00 E; 5 K; 5.00 F	170	745	350	2220	STD	8	TT	94 A6
	6.00 - 16	4.50 E	4.00 E; 5 K; 5.00 F	170	745	350	2220	SPL	8	TT	94 A6

STD: Standard - SPL: Special



Ø 16"	Tire size	RIM		S.W. (mm)	O.D. (mm)	SLR (mm)	RC (mm)	Version	PR	Type	LI/SS
		Rec.	Alt.								
	6.50 - 16	4.50 E	4.00 E; 5 K; 5.00 F; 5.50 F	180	770	361	2295	STD	6	TT	91 A6
	6.50 - 16	4.50 E	4.00 E; 5 K; 5.00 F; 5.50 F	180	770	361	2295	IND	6	TT	91 A6
	6.50 - 16	4.50 E	4.00 E; 5 K; 5.00 F; 5.50 F	180	770	361	2295	SPL	6	TT	91 A6
	6.50 - 16	4.50 E	4.00 E; 5 K; 5.00 F; 5.50 F	180	770	361	2295	HD	8	TT	98 A6
	6.50 - 16	4.50 E	4.00 E; 5 K; 5.00 F; 5.50 F	180	770	361	2295	SPL	10	TT	102 A6
	7.50 - 16	5.50 F	5.00 F; 5 K; 6.00 F	205	820	383	2445	STD	6	TT	98 A6
	7.50 - 16	5.50 F	5.00 F; 5 K; 6.00 F	205	820	383	2445	SPL	6	TT	98 A6
	7.50 - 16	5.50 F	5.00 F; 5 K; 6.00 F	205	820	383	2445	STD	8	TT	103 A6
	7.50 - 16	5.50 F	5.00 F; 5 K; 6.00 F	205	820	383	2445	SPL	8	TT	103 A6
	7.50 - 16	5.50 F	5.00 F; 5 K; 6.00 F	205	820	383	2445	STD	10	TT	109 A6
	7.50 - 16	5.50 F	5.00 F; 5 K; 6.00 F	205	820	383	2445	IMP	14	TT	122 A6
	10.00 - 16	W 8	W 8 L	273	895	411	2667	STD	8	TT	115 A6
	11.00 - 16	W 10 L	W 8; W 8 L	326	980	447	2920	STD	8	TT	118 A6
Ø 18"	Tire size	Rec.	Alt.	S.W. (mm)	O.D. (mm)	SLR (mm)	RC (mm)	Version	PR	Type	LI/SS
	6.00 - 18	4.50 E	4.00 E; 5.00 F	172	800	374	2410	STD	8	TT	101 A6
	7.50 - 18	5.50 F	-	208	875	410	2605	STD	6	TT	101 A6

IND: Industrial - STD: Standard - SPL: Special - IMP: Implement





Bias



Performance



Steering Control



# TF 8181

TF 8181 is a field and road tire designed for 2WD tractors in soil tillage and haulage applications. This tire provides excellent steering performance.

Ø 18"	Tire size	RIM		S.W. (mm)	O.D. (mm)	SLR (mm)	RC (mm)	Version	PR	Type	LI/SS
		Rec.	Alt.								
	7.50 - 18	5.50 F	-	208	875	410	2605	SPL	6	TT	101 A6
	7.50 - 18	5.50 F	-	208	875	410	2605	STD	8	TT	106 A6
	7.50 - 18	5.50 F	-	208	875	410	2605	HD	8	TT	106 A6
	7.50 - 18	5.50 F	-	208	875	410	2605	SPL	8	TT	106 A6
Ø 19"	6.00 - 19	4.50 E	4.00 E; 5.50 F	165	814	385	2425	STD	6	TT	93 A6
Ø 20"	6.50 - 20	5.00 F	4.00 E; 5.50 F	180	865	409	2578	STD	6	TT	97 A6
	6.50 - 20	5.00 F	4.00 E; 5.50 F	180	865	409	2578	STD	8	TT	101 A6
	6.50 - 20	5.00 F	4.00 E; 5.50 F	180	865	409	2578	SPL	8	TT	101 A6
	7.50 - 20	5.50 F	5.00 F	205	915	431	2725	STD	6	TT	103 A6
	7.50 - 20	5.50 F	5.00 F	205	915	431	2725	HD	6	TT	103 A6
	7.50 - 20	5.50 F	5.00 F	205	915	431	2725	STD	8	TT	109 A6
	7.50 - 20	5.50 F	5.00 F	205	915	431	2725	HD	8	TT	109 A6
	7.50 - 20	5.50 F	5.00 F	205	915	431	2725	SPL	8	TT	109 A6

STD: Standard - SPL: Special - HD: Heavy Duty



# TF 9393

TF 9393 is an agricultural front tire specifically designed for small tractors in soils tillage applications and it is particularly suitable on loose soils. Its tread shows a wide center part and shoulder ribs. The special tread design provides excellent steering performance on all surfaces.

Ø 16"	Tire size	RIM		S.W. (mm)	O.D. (mm)	SLR (mm)	RC (mm)	Version	PR	Type	LI/SS
		Rec.	Alt.								
	7.50 - 16	5.50 F	5.00 F; 6.00 F	210	810	-	-	STD	8	TT	103 A6

STD: Standard



Bias



Performance



Steering Control





Bias



Performance



Steering Control



# TF 9090

TF 9090 is a tire designed for small tractors in soil tillage operations. The special tread design provides excellent steering performance on loose soil.

Ø 12"	Tire size	RIM		S.W. (mm)	O.D. (mm)	SLR (mm)	RC (mm)	Version	PR	Type	LI/SS										
		Rec.	Alt.																		
	4.00 - 12	3.00 D	2.50 C	112	530	255	1573	STD	4	TT	60 A6										
	4.00 - 12	3.00 D	2.50 C	112	530	255	1573	STD	6	TT	68 A6										
Ø 15"	Tire size	RIM		S.W. (mm)	O.D. (mm)	SLR (mm)	RC (mm)	Version	PR	Type	LI/SS										
		Rec.	Alt.																		
	5.00 - 15	4.00 E	3.00 D; 4 J; 4 1/2 J	140	655	307	1951	STD	4	TT	73 A6										
	5.00 - 15	4.00 E	3.00 D; 4 J; 4 1/2 J	140	655	307	1951	STD	6	TT	82 A6										
Ø 16"	Tire size	RIM		S.W. (mm)	O.D. (mm)	SLR (mm)	RC (mm)	Version	PR	Type	LI/SS										
		Rec.	Alt.																		
			4.00 - 16									3.00 D	-	112	630	301	1877	STD	4	TT	69 A6
			5.50 - 16									4.00 E	3.50 D; 4.50 E	150	710	332	2116	STD	6	TT	86 A6
			6.00 - 16									4.50 E	4.00 E; 5 K; 5.00 F	170	735	346	2190	STD	6	TT	88 A6
			6.00 - 16									4.50 E	4.00 E; 5 K; 5.00 F	170	735	346	2190	SPL	6	TT	88 A6
			6.00 - 16									4.50 E	4.00 E; 5 K; 5.00 F	170	735	346	2190	STD	8	TT	94 A6
			6.00 - 16									4.50 E	4.00 E; 5 K; 5.00 F	170	735	346	2190	SPL	8	TT	94 A6
			6.50 - 16									4.50 E	4.00 E; 5 K; 5.00 F; 5.50 F	180	765	359	2280	STD	6	TT	91 A6
			6.50 - 16									4.50 E	4.00 E; 5 K; 5.00 F; 5.50 F	180	765	359	2280	STD	8	TT	98 A6
	7.50 - 16	5.50 F	5.00 F; 5 K; 6.00 F	207	810	379	2414	STD	6	TT	98 A6										
	7.50 - 16	5.50 F	5.00 F; 5 K; 6.00 F	207	810	379	2414	SPL	6	TT	98 A6										
	7.50 - 16	5.50 F	5.00 F; 5 K; 6.00 F	207	810	379	2414	STD	8	TT	103 A6										

STD: Standard - SPL: Special



Ø 16"	Tire size	RIM		S.W. (mm)	O.D. (mm)	SLR (mm)	RC (mm)	Version	PR	Type	LI/SS
		Rec.	Alt.								
	7.50 - 16	5.50 F	5.00 F; 5 K; 6.00 F	207	810	379	2414	SPL	8	TT	103 A6
	7.50 - 16	5.50 F	5.00 F; 5 K; 6.00 F	207	810	379	2414	STD	10	TT	109 A6
	9.00 - 16	W 8	6.00 F; W 7; W 8 L	257	855	398	2548	STD	8	TT	111 A6
	9.00 - 16	W 8	6.00 F; W 7; W 8 L	257	855	398	2548	STD	10	TT	116 A6
	9.00 - 16	W 8	6.00 F; W 7; W 8 L	257	855	398	2548	SPL	10	TT	116 A6
	10.00 - 16	W 8	W 8 L	275	900	418	2682	STD	8	TT	115 A6
	10.00 - 16	W 8	W 8 L	275	900	418	2682	SPL	8	TT	115 A6
	10.00 - 16	W 8	W 8 L	275	900	418	2682	STD	10	TT	119 A6
	10.00 - 16	W 8	W 8 L	275	900	418	2682	SPL	10	TT	119 A6
	11.00 - 16	W 10 L	W 8; W 8 L	320	970	448	2890	STD	8	TT	118 A6
	11.00 - 16	W 10 L	W 8; W 8 L	320	970	448	2890	STD	8	TL	118 A6
	11.00 - 16	W 10 L	W 8; W 8 L	320	970	448	2890	SPL	8	TT	118 A6
Ø 18"	Tire size	RIM		S.W. (mm)	O.D. (mm)	SLR (mm)	RC (mm)	Version	PR	Type	LI/SS
		Rec.	Alt.								
			7.50 - 18								
	7.50 - 18	5.50 F	-	207	860	404	2562	SPL	6	TT	101 A6
	7.50 - 18	5.50 F	-	207	860	404	2562	STD	8	TT	106 A6

STD: Standard - SPL: Special





Bias



Performance



Steering Control



# TF 9090

TF 9090 is a tire designed for small tractors in soil tillage operations. The special tread design provides excellent steering performance on loose soil.

Ø 18"	Tire size	RIM		S.W. (mm)	O.D. (mm)	SLR (mm)	RC (mm)	Version	PR	Type	LI/SS										
		Rec.	Alt.																		
	7.50 - 18	5.50 F	-	207	860	404	2562	SPL	8	TT	106 A6										
	7.50 - 18	5.50 F	-	207	860	404	2562	STD	10	TT	113 A6										
Ø 19"	Tire size	RIM		S.W. (mm)	O.D. (mm)	SLR (mm)	RC (mm)	Version	PR	Type	LI/SS										
		Rec.	Alt.																		
	4.00 - 19	3.00 D	-	115	715	343	2145	STD	4	TT	72 A6										
	6.00 - 19	4.50 E	4.00 E; 5.00 F	167	815	386	2445	STD	6	TT	93 A6										
Ø 20"	Tire size	RIM		S.W. (mm)	O.D. (mm)	SLR (mm)	RC (mm)	Version	PR	Type	LI/SS										
		Rec.	Alt.																		
			7.50 - 20									5.50 F	5.00 F	205	915	431	2725	STD	6	TT	103 A6
			7.50 - 20									5.50 F	5.00 F	205	915	431	2725	SPL	6	TT	103 A6
			7.50 - 20									5.50 F	5.00 F	205	915	431	2725	STD	8	TT	109 A6
	7.50 - 20	5.50 F	5.00 F	205	915	431	2725	IND	8	TT	109 A6										
	7.50 - 20	5.50 F	5.00 F	205	915	431	2725	SPL	8	TT	109 A6										

STD: Standard - SPL: Special



# COMMANDER (F)

COMMANDER (F) is a front 3-rib pattern tire - perfect for soil tillage and haulage applications. Its deep tread made of a cut-and-chip resistant compound ensures a longer tire life, together with high load capacity.

Ø 16"	Tire size	RIM		S.W. (mm)	O.D. (mm)	SLR (mm)	RC (mm)	Version	PR	Type	LI/SS
		Rec.	Alt.								
	5.50 - 16	4.00 E	3.50D; 4.50E	155	720	340	2145	STD	6	TT	86 A6
	6.00 - 16	4.50 E	4.00 E; 5.00 F	170	745	349	2234	STD	8	TT	94 A6
	6.50 - 16	4.50 E	4.00 E; 5.00 F; 5.50 F	183	770	362	2332	STD	8	TT	98 A6
	6.50 - 16	4.50 E	4.00 E; 5.00 F; 5.50 F	183	770	362	2332	STD	10	TT	102 A6
	7.50 - 16	5.50 F	5.00 F; 5 K; 6.00 F	210	810	376	2433	STD	8	TT	103 A6

STD: Standard



Bias



Technologies



Deep Tread

Performance



Durability



High Load Capacity



Cut and Chip Resistance





Bias



Technologies



Deep Tread

Performance



Durability



High Load Capacity



Cut and Chip Resistance



# COMMANDER TWIN RIB

COMMANDER TWIN RIB is a 4-rib pattern tire with shoulder notches providing excellent grip. Its wider tread profile ensures good weight distribution. The strong casing along with a superior tread compound provide a longer tire life. COMMANDER TWIN RIB is perfect for soil tillage and haulage applications.

Ø 15"	Tire size	RIM		S.W. (mm)	O.D. (mm)	SLR (mm)	RC (mm)	Version	PR	Type	LI/SS
		Rec.	Alt.								
	5.00 - 15	4.00 E	-	145	665	-	-	STD	6	TT	82 A6
Ø 16"	6.00 - 16	4.50 E	4.00 E ; 5.00 F	170	750	-	-	STD	8	TT	94 A6
	6.50 - 16	4.50 E	4.00 E ; 5.00 F ; 5.50 F	180	761	-	-	STD	8	TT	98 A6
	7.50 - 16	5.50 F	5.00 F ; 5 K ; 6.00 F	210	810	-	-	STD	8	TT	103 A6
Ø 20"	6.50 - 20	5.00 F	4.00 E ; 5.50 F	190	875	-	-	STD	8	TT	101 A6

STD: Standard



# COMMANDER 3 RIB

COMMANDER 3 RIB is a 3-rib pattern front tire designed for soil tillage and haulage operations. It provides excellent durability and load capacity thanks to the optimized weight distribution on center and shoulder ribs. The strong casing along with the cut-and-chip resistant compound ensure outstanding puncture resistance.

Ø 16"	Tire size	RIM		S.W. (mm)	O.D. (mm)	SLR (mm)	RC (mm)	Version	PR	Type	LI/SS
		Rec.	Alt.								
	6.00 - 16	4.50 E	4.00 E ; 5.00 F	175	740	-	-	STD	8	TT	94 A6

STD: Standard



Bias



Technologies



Deep Tread

Performance



Durability



High Load Capacity



Cut and Chip Resistance



Bias



Performance



Steering Control



# POWER RIB F2

POWER RIB F2 has been specially designed for 2WD tractors in soil tillage applications. This field-oriented tire is particularly suitable for all operations where excellent steering performance is required.

Ø 15"	Tire size	RIM		S.W. (mm)	O.D. (mm)	SLR (mm)	RC (mm)	Version	PR	Type	LI/SS
		Rec.	Alt.								
	<b>11L - 15 SL</b>	8 LB	10 LB	279	813	374	2423	STD	8	TL	110A6

STD: Standard



# PRO RIB F2M

PRO RIB F2M is an agricultural tire for 2WD tractors in soil tillage applications. It is particularly suitable for all operations requiring a high level of handling.

Ø 15"	Tire size	RIM		S.W. (mm)	O.D. (mm)	SLR (mm)	RC (mm)	Version	PR	Type	LI/SS
		Rec.	Alt.								
	<b>9.5L - 15 SL</b>	7.00	8 LB	240	780	364	2325	STD	8	TL	102A8
	<b>11L - 15 SL</b>	8 LB	10 LB	280	795	370	2370	STD	8	TL	106A8

Ø 16"	Tire size	RIM Rec.	RIM Alt.	S.W. (mm)	O.D. (mm)	SLR (mm)	RC (mm)	Version	PR	Type	LI/SS
	<b>10.00 - 16 SL</b>	8 LB	W 8 L	280	880	409	2620	STD	8	TL	110A8
	<b>10.00 - 16 SL</b>	8 LB	W 8 L	280	880	409	2620	IND	8	TT	110A8
	<b>11.00 - 16 SL</b>	10 LB	W 8 L; 8 LB	335	950	440	2830	STD	8	TT	114A8
	<b>11.00 - 16 SL</b>	10 LB	W 8 L; 8 LB	335	950	440	2830	STD	8	TL	114A8
	<b>11.00 - 16 SL</b>	10 LB	W 8 L; 8 LB	335	950	440	2830	IND	8	TT	114A8

Ø 16.1"	Tire size	RIM Rec.	RIM Alt.	S.W. (mm)	O.D. (mm)	SLR (mm)	RC (mm)	Version	PR	Type	LI/SS

STD: Standard - IND: Industrial





Bias



Technologies



Hard Compound

Performance



Steering Control



Stubble Resistance



Durability



# RIB F3

RIB F3 is a field-oriented tire designed for 2WD tractors in soil tillage and haulage operations. Some sizes are suitable for transport applications using trailers. The RIB F3 tire is the ideal partner for all operations that require a high level of handling. It has been designed with a hard compound to ensure great durability and stubble resistance.

Ø 16"	Tire size	RIM		S.W. (mm)	O.D. (mm)	SLR (mm)	RC (mm)	Version	PR	Type	LI/SS
		Rec.	Alt.								
	9.00 - 16	W 8	6.00 F; W 7; W 8 L	245	878	387	2573	STD	12	TT	120 A6/ 112 A8
	9.00 - 16	W 8	6.00 F; W 7; W 8 L	245	878	387	2573	STD	12	TL	120 A6/ 112 A8
	9.00 - 16	W 8	6.00 F; W 7; W 8 L	245	878	387	2573	HD	12	TT	120 A6/ 112 A8

STD: Standard - HD: Heavy Duty



# STEER FARM

STEER FARM has been designed for 2WD tractors in soil tillage applications, providing excellent steering performance.

Ø 14"	Tire size	RIM		S.W. (mm)	O.D. (mm)	SLR (mm)	RC (mm)	Version	PR	Type	LI/SS
		Rec.	Alt.								
	5.20 - 14	3.50 D	4.00 E	135	625	296	1837	STD	6	TT	75 A6
Ø 16"	6.00 - 16	4.50 E	4.00 E; 5 K; 5.00 F	170	740	345	2205	STD	8	TT	94 A6
	6.50 - 16	4.50 E	4.00 E; 5.00 F; 5.50 F	185	770	-	-	STD	8	TT	98 A6
	7.50 - 16	5.50 F	5.00 F; 5 K; 6.00 F	205	805	373	2391	STD	8	TT	103 A6
Ø 20"	6.50 - 20	5.50 F	4.00 E; 5.00 F	196	878	-	-	STD	8	TT	101 A6

STD: Standard



Bias



Performance



Steering Control



# Load Index

The load index is a code that defines a tire's maximum weight capacity at the speed given by its speed symbol provided that the usage conditions recommended by the Manufacturer are fully complied with.

## Corresponding values of load index (LI) and load capacity per wheel (kg)

LI	kg	LI	kg	LI	kg	LI	kg
50	190	85	515	120	1400	155	3875
51	195	86	530	121	1450	156	4000
52	200	87	545	122	1500	157	4125
53	206	88	560	123	1550	158	4250
54	212	89	580	124	1600	159	4375
55	218	90	600	125	1650	160	4500
56	224	91	615	126	1700	161	4625
57	230	92	630	127	1750	162	4750
58	236	93	650	128	1800	163	4875
59	243	94	670	129	1850	164	5000
60	250	95	690	130	1900	165	5150
61	257	96	710	131	1950	166	5300
62	265	97	730	132	2000	167	5450
63	272	98	750	133	2060	168	5600
64	280	99	775	134	2120	169	5800
65	290	100	800	135	2180	170	6000
66	300	101	825	136	2240	171	6150
67	307	102	850	137	2300	172	6300
68	315	103	875	138	2360	173	6500
69	325	104	900	139	2430	174	6700
70	335	105	925	140	2500	175	6900
71	345	106	950	141	2575	176	7100
72	355	107	975	142	2650	177	7300
73	365	108	1000	143	2725	178	7500
74	375	109	1030	144	2800	179	7750
75	387	110	1060	145	2900	180	8000
76	400	111	1090	146	3000	181	8250
77	412	112	1120	147	3075	182	8500
78	425	113	1150	148	3150	183	8750
79	437	114	1180	149	3250	184	9000
80	450	115	1215	150	3350	185	9250
81	462	116	1250	151	3450	186	9500
82	475	117	1285	152	3550	187	9750
83	487	118	1320	153	3650	188	10000
84	500	119	1360	154	3750	189	10300

# Speed Symbol

The speed code is a value that indicates the maximum admitted speed at which the tire can carry the weight corresponding to its load index provided that the usage conditions recommended by the Manufacturer are fully complied with.

Speed symbol	A1	A2	A3	A4	A6	A8	B	C	D	E	F	J
km/h	5	10	15	20	30	40	50	60	65	70	80	100
mph	3	6	9	12	19	25	31	37	40	43	50	62





### Corporate Office

**Balkrishna Industries Ltd.**

BKT HOUSE, C/15, Trade World, Kamala Mills Compound, Senapati Bapat Marg, Lower Parel, Mumbai - 400013, India  
 Tel: (+91) 22-6666 3800 - Fax: (+91) 22-6666 3898/99 - e-mail: info@bkt-tires.com - bkt-tires.com

#### BKT Europe srl

Viale Della Repubblica,133  
 20831 Seregno (MB), Italy  
 Tel: (+39) 0362 33 03 28  
 (+39) 0362 32 51 07  
 Fax: (+39) 0362 23 24 72

#### BKT USA Inc.

202 Montrose West, Suite 240/250  
 Copley, (Akron) Ohio 44321, USA  
 Tel: (+1) 330 836 1090  
 Fax: (+1) 330 836 1091  
 Toll Free: (+1) 888 660 0662

#### BKT Tires (CANADA) Inc.

55 York Street, Suite 401  
 Toronto, Ontario M5J 1R7, Canada  
 Tel: AG/IND (+1) 905 641 5636  
 OTR (+1) 780 888 5667  
 Fax: (+1) 416 229 1711



[bkt-tires.com](http://bkt-tires.com)

### Proud Sponsor of



OFFICIAL OFF-HIGHWAY TIRE OF THE KFC BBL

