



GROWING TOGETHER

PORT TIRES

INDUSTRIAL TIRES



INDUSTRIAL TIRES

PORT TIRES

BKT has successfully coped with the needs in logistics and port handling applications by designing tires that are able to operate on insidious terrain as well as on rough cemented surfaces where heavy loads needs to be lifted at maximum safety. BKT tires have been designed in order to withstand the requirements of today's applications and modern equipment, providing better stability, traction and safety thanks to the special tread design and the reinforced sidewalls. In short, a wide range of extraordinarily safe tires protecting operators on their job and improving considerably productivity!

TECHNOLOGIES AND PERFORMANCE

- Extra Deep Tread
- Heavy Duty
- Special Antistatic Compound
- Special Compound
- Comfort
- Cut and Chip Resistance
- Deep Tread
- Durability
- Fuel Economy
- Handling & Comfort
- Hard Surfaces
- Heat Resistance
- High Load Capacity
- High Puncture Resistance
- Stability
- Traction



Radials

Radial tires have cord plies that are arranged running radially from bead to bead around the tire. Sidewall and tread have independent functional features providing more flexibility, great performance, durability, and fuel economy.



Bias

Bias tires have cord plies that are arranged running diagonally from bead to bead across the tire. Layers overlap forming a crisscross pattern. This design features extraordinary sidewall resistance, puncture resistance and high load capacity.

PORT TIRES



XL GRIP IND3 (RTG)



[p. 6]



ROCK GRIP IND4



[p. 7]



SM 54 L4S



[p. 8]



CONTAINER KING



[p. 15]



PORT KING PLUS



[p. 15]



PORT KING CLASSIC



[p. 16]



SM 54 M L4S



[p. 9]



SM 55 L5S IND5



[p. 10]



POWER TRAX HD



[p. 11]



PORTMAX PM 90



[p. 17]



PORTMAX PM 93 PLUS



[p. 18]



PORTMAX PT 93



[p. 19]



POWER TRAX HD SMOOTH



[p. 12]



EM 937 IND3 (ECH)



[p. 13]



XL GRIP IND-3 (ECH)



[p. 14]



ROCK STAR IND4



[p. 20]





Bias



XL GRIP IND3 (RTG)

XL GRIP (IND-3) is a bias-ply tire for RTG cranes in stacking and lifting applications. The tire features a strong casing made of a specially formulated tread compound, which provides an extended tire life-cycle.

Technologies



Heavy Duty

Performance



Stability



Durability



Hard Surfaces



Cut and Chip Resistance

Ø 25"	Tire size	Type	PR	LI/SS	Version	S.W. (mm)	O.D. (mm)	SLR (mm)	RC (mm)	RIM	
										Rec.	Alt.
	16.00 - 25	TL	32	-	IND	465	1485	682	4395	11.25/2.0	13.00/2.0
	18.00 - 25	TL	32	-	IND	510	1615	739	4780	13.00/2.5	15.00/2.5
	18.00 - 25	TL	40	-	IND	510	1615	739	4780	13.00/2.5	15.00/2.5
	18.00 - 25	TL	40	-	PS	510	1615	739	4780	13.00/2.5	15.00/2.5
	21.00 - 25	TL	32	-	IND	576	1750	789	5185	15.00/3.0	17.00/3.0
	21.00 - 25	TL	36	-	IND	576	1750	789	5185	15.00/3.0	17.00/3.0
	21.00 - 25	TL	40	-	IND	576	1750	789	5185	15.00/3.0	17.00/3.0
	21.00 - 25	TL	44	-	IND	576	1750	789	5185	15.00/3.0	17.00/3.0
Ø 29"	24.00 - 29	TL	42	-	IND	656	1994	900	5860	17.00/3.5	-
Ø 35"	21.00-35	TL	36	-	IND	580	2020	928	5980	15.00/3.0	-
	21.00-35	TL	40	-	IND	580	2020	928	5980	15.00/3.0	-
	24.00 - 35	TL	48	-	IND	655	2130	975	6302	17.00/3.5	-

IND: Industrial - PS: Port Special



ROCK GRIP IND4

ROCK GRIP PORT INDUSTRIAL (IND-4) is a bias-ply tire designed for port container handling equipment. The special ROCK GRIP compounds are well-suited for fast-paced shipping environments where heat and cut resistance is a must.



Bias



Performance



Stability



Durability



Heat Resistance

Ø 24"	Tire size	Type	PR	LI/SS	Version	S.W. (mm)	O.D. (mm)	SLR (mm)	RC (mm)	RIM	
										Rec.	Alt.
	12.00 - 24	TT	20	-	PORT IND	315	1265	595	3755	8.5	8.0
	12.00 - 24	TT	24	-	PORT IND	315	1265	595	3755	8.5	8.0
	14.00 - 24	TL	24	-	PORT IND	375	1410	647	4173	10.00 W	-
	14.00 - 24	TL	28	-	PORT IND	375	1410	647	4173	10.00 W	-
	14.00 - 24	TL	28	-	PORT IND	375	1410	647	4173	10.00 WA	10.00 VA
	14.00 - 24	TL	32	-	PORT IND	375	1410	647	4173	10.00 W	-
	14.00 - 24	TL	32	-	PORT IND	375	1410	647	4173	10.00 WA	10.00 VA
Ø 25"	16.00 - 25	TL	32	-	PORT IND	470	1525	699	4514	11.25/2.0	13.00/2.0
	16.00 - 25	TL	36	-	PORT IND	470	1525	699	4514	11.25/2.0	13.00/2.0
	18.00 - 25	TL	40	-	PORT IND	510	1650	753	4885	13.00/2.5	15.00/2.5
Ø 33"	18.00 - 33	TL	36	-	PORT IND	510	1887	869	5586	13.00/2.5	-
	18.00 - 33	TL	40	-	PORT IND	510	1887	869	5586	13.00/2.5	-
	18.00 - 33	TL	44	-	PORT IND	510	1887	869	5586	13.00/2.5	-

PORT IND: Port Industrial





Bias



Technologies



Heavy Duty

Performance



Cut and Chip Resistance



Durability



Stability



Hard Surfaces



SM 54 L4S



SM 54 (L-4S) has been specially designed for empty container handlers and reach stackers in intermodal/logistics applications. It features high stability in lift mode as well as a deep and smooth tread design, providing excellent cut resistance to ensure an extended tire life-cycle.

Ø 25"	Tire size	Type	PR	LI/SS	Version	S.W. (mm)	O.D. (mm)	SLR (mm)	RC (mm)	RIM	
										Rec.	Alt.
Ø 25"	16.00 - 25	TL	28	-	IND	430	1470	676	4354	11.25/2.0	13.00/2.0
	16.00 - 25	TL	32	-	IND	430	1470	676	4354	11.25/2.0	13.00/2.0
	18.00 - 25	TL	40	-	IND	528	1650	750	4880	13.00/2.5	15.00/2.5
Ø 33"	18.00 - 33	TL	36	-	PORT IND	535	1895	840	5609	13.00/2.5	-
	18.00 - 33	TL	40	-	PORT IND	535	1895	840	5609	13.00/2.5	-

IND: Industrial - PORT IND: Port Industrial

SM 54 M L4S



SM 54 M (L-4S) is a modified version of the SM 54 pattern. The flatter tread profile results in a large contact area ensuring a longer tire life-cycle. This tire has been specially designed for empty container handlers and reach stackers in intermodal/logistics applications. SM 54 M features high stability in lift mode as well as a deep and smooth tread design, providing excellent cut resistance.

Ø 25"	Tire size	Type	PR	LI/SS	Version	S.W. (mm)	O.D. (mm)	SLR (mm)	RC (mm)	RIM	
										Rec.	Alt.
Ø 25"	18.00 - 25	TL	40	-	IND	528	1650	750	4880	13.00/2.5	15.00/2.5

IND: Industrial



Bias



Technologies



Deep Tread

Performance



Stability



Durability



Cut and Chip Resistance





Bias



SM 55 L5S IND5



SM 55 (L-5S) (IND-5) has been specially designed for reach stackers and container handlers. Its special abrasion-resistant tread compound provides an extended tire life on asphalt or concrete surfaces and offers excellent stability to vehicles in lift mode.

Ø 25"	Tire size	Type	PR	LI/SS	Version	S.W. (mm)	O.D. (mm)	SLR (mm)	RC (mm)	RIM	
										Rec.	Alt.
	18.00 - 25	TL	40	-	PS	517	1665	765	5118	13.00/2.5	15.00/2.5

PS: Port Special

Technologies



Extra Deep Tread



Heavy Duty

Performance



Stability



Durability



Hard Surfaces



Cut and Chip Resistance



POWER TRAX HD

POWER TRAX HD premium tire is specially designed for equipment in port and underground mining applications. Its deep tread, the extra thick sidewall and the tough casing provide exceptional durability minimizing the risk of punctures and accidental damages. The tire features excellent cut and chip resistance, which is particularly suitable for rough and hard surfaces. The specially designed rim guard ensures protection against flats and wheel damage in the rim flange area.

Ø 20"	Tire size	Type	PR	LI/SS	Version	S.W. (mm)	O.D. (mm)	SLR (mm)	RC (mm)	RIM	
										Rec.	Alt.
	12.00 - 20	TT	20	-	STD	320	1150	-	-	8.50	9.0
	12.00 - 20	TT	28	-	STD	320	1150	-	-	8.50	9.0

STD: Standard



Bias

Technologies



Heavy Duty



Extra Deep Tread

Performance



Durability

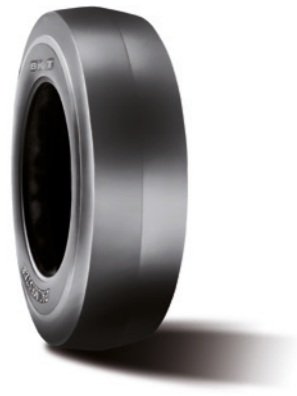


Stability



Cut and Chip Resistance





POWER TRAX HD SMOOTH

POWER TRAX HD SMOOTH is a bias-ply tire specially designed for port and underground mining operations. The special sidewall protection along with a solid tread prevents cut and puncture damages that are common in such demanding environments. When you need to move heavy-duty loads, Power Trax HD Smooth is your ideal partner.

Ø 20"	Tire size	Type	PR	LI/SS	Version	S.W. (mm)	O.D. (mm)	SLR (mm)	RC (mm)	RIM	
										Rec.	Alt.
	12.00 - 20	TT	20	-	STD	320	1150	-	-	8.50	9.0
	12.00 - 20	TT	28	-	STD	320	1150	-	-	8.50	9.0

STD: Standard



EM 937 IND3 (ECH)

EM 937 (E-3) IND is specially designed for empty-container-handling operations in stacking and loading applications. It features excellent durability and a long tire life. EM 937 (E-3) IND is ideal on paved surfaces and for all operations requiring a high level of handling in the port.

*For size 14.00-24 please confirm service rim or consult manufacturer/distributor.

Ø 24"	Tire size	Type	PR	LI/SS	Version	S.W. (mm)	O.D. (mm)	SLR (mm)	RC (mm)	RIM	
										Rec.	Alt.
	14.00 - 24	TT	28	-	PORT IND	628	1368	628	4050	10.00 W	-
	14.00 - 24	TL	28	-	PORT IND	628	1368	628	4050	10.00 W	-
	14.00 - 24	TL	28	-	PORT IND	628	1368	628	4050	10.00 WA	10.00 VA

PORT IND: Port Industrial



Technologies



Heavy Duty



Extra Deep Tread

Performance



Stability



Durability



Cut and Chip Resistance



Bias



Technologies



Heavy Duty

Performance



Handling & Comfort



Stability



Durability



Cut and Chip Resistance



Hard Surfaces





Bias



XL GRIP IND3 (ECH)

XL GRIP (IND-3) is a bias-ply tire for empty container handlers in stacking and lifting applications. The tire features a strong casing, which provides great durability and as well as a high stability in lift mode.

Ø 24"	Tire size	Type	PR	LI/SS	Version	S.W. (mm)	O.D. (mm)	SLR (mm)	RC (mm)	RIM	
										Rec.	Alt.
	12.00 - 24	TT	24	-	IND	320	1250	585	3710	8.5	8.0
Ø 25"	16.00 - 25	TL	28	-	IND	465	1485	682	4395	11.25/2.0	13.00/2.0
	18.00 - 25	TL	32	-	PORT IND	510	1615	739	4780	13.00/2.5	15.00/2.5
	18.00 - 25	TL	40	-	PORT IND	510	1615	739	4780	13.00/2.5	15.00/2.5

IND: Industrial - PORT IND: Port Industrial

Technologies



Heavy Duty

Performance



Stability



Durability



Hard Surfaces



Cut and Chip Resistance



CONTAINER KING

CONTAINER KING has been designed for reach stackers in intermodal transport and logistics applications. This extraordinary tire is made of a highly wear-and-tear-resistant tread compound which minimizes tread cracks. CONTAINER KING ensures an extended tire life-cycle plus exceptional stability in lift mode.

Ø 25"	Tire size	Type	PR	LI/SS	Version	S.W. (mm)	O.D. (mm)	SLR (mm)	RC (mm)	RIM	
										Rec.	Alt.
	18.00 - 25	TL	40	-	IND	528	1675	765	4955	13.00/2.5	15.00/2.5
Ø 33"	18.00 - 33	TL	40	-	IND	510	1895	-	-	13.00/2.5	-

IND: Industrial



Bias



Performance



Stability



Durability



Bias



Technologies



Special Compound

Performance



Durability



Deep Tread



PORT KING PLUS

PORT KING PLUS has been specially designed for reach stackers in intermodal/logistics applications. Its deep tread with sturdy lugs along with the special compound provides an extended tire life-cycle. It is also available with a Groove Crack Resistant tread Compound (GCRC).



Ø 25"	Tire size	Type	PR	LI/SS	Version	S.W. (mm)	O.D. (mm)	SLR (mm)	RC (mm)	RIM	
										Rec.	Alt.
	18.00 - 25	TL	40	-	GCRC	528	1675	765	4955	13.00/2.5	15.00/2.5

GCRC: Groove Crack Resistance Compound



Bias



Technologies



Special Compound

Performance



Stability



High Load Capacity



High Puncture Resistance



Durability



PORT KING CLASSIC

PORT KING CLASSIC is BKT's latest-generation port tire, which has been specially engineered for container handling equipment. The tire ensures maximum operating efficiency and exceptional stability in lift mode. Thanks to its strong nylon casing, PORT KING CLASSIC stands out for higher load capacity minimizing the risk of impact breaks, snags, and punctures. The new wear-resistant compound has been developed to ensure an extended product life-cycle, and to provide the best return on investment.

Ø 25"	Tire size	Type	PR	LI/SS	Version	S.W. (mm)	O.D. (mm)	SLR (mm)	RC (mm)	RIM	
										Rec.	Alt.
	18.00 - 25	TL	40	-	IND	528	1675	765	4955	13.00/2.5	15.00/2.5

IND: Industrial



PORTMAX PM 90

PORTMAX PM 90 has been specially designed for reach stackers in several applications including industrial handling and steelworks. It is an All Steel radial tire that provides great durability and stability. Its special antistatic tread compound ensures particular heat resistance and an extended tire life-cycle. PORTMAX PM 90 offers reduced rolling resistance improving fuel economy.

Ø 25"	Tire size	Type	STAR RATING	LI/SS	Version	S.W. (mm)	O.D. (mm)	SLR (mm)	RC (mm)	RIM	
										Rec.	Alt.
	18.00 R 25	TL	***	207A5	IND	495	1655	730	5024	13.00/2.50	-

Ø 33"	Tire size	Type	STAR RATING	LI/SS	Version	S.W. (mm)	O.D. (mm)	SLR (mm)	RC (mm)	RIM	
										Rec.	Alt.
	18.00 R 33	TL	***	214A5	IND	485	1845	857	5624	13.00/2.50	13.00/2.50

IND: Industrial



Radial



A5

Technologies



Special Antistatic Compound

Performance



Stability



Durability



Heat Resistance



Fuel Economy





Radial



A5



PORTMAX PM 93 PLUS

PORTMAX PM 93 PLUS has been specially designed for straddle carriers in port container handling operations. It is an All Steel radial tire with multilayer steel belts providing a greater stability and durability. Its special antistatic tread compound ensures a particular heat resistance and a longer tire life. PORTMAX PM 93 PLUS offers reduced rolling resistance improving fuel economy.

Ø 25"	Tire size	Type	STAR RATING	LI/SS	Version	S.W. (mm)	O.D. (mm)	SLR (mm)	RC (mm)	RIM	
										Rec.	Alt.
	16.00 R 25	TL	**	200 A5	IND	425	1515	699	4582	11.25/2.0	-

IND: Industrial

Technologies



Special Antistatic Compound

Performance



Stability



Durability



Heat Resistance



Fuel Economy



PORTMAX PT 93

PORTMAX PT 93 is a terminal tractor and trailer tire, which has been specifically engineered for heavy-duty operations in terminal environments such as ports and logistic hubs. The special antistatic tread compound ensures excellent wear and heat resistance even under the most demanding operating conditions. PORTMAX PT 93 offers excellent handling features and outstanding grip along with enhanced durability.

Ø 22.5"	Tire size	Type	STAR RATING	LI/SS	Version	S.W. (mm)	O.D. (mm)	SLR (mm)	RC (mm)	RIM	
										Rec.	Alt.
	280/75 R 22.5	TL	-	168 A8	IND	282	998	-	-	8.25	9.00
	310/80 R 22.5	TL	-	175 A8	IND	308	1070	-	-	9.00	8.25

IND: Industrial



Radial



A8

Technologies



Special Antistatic Compound

Performance



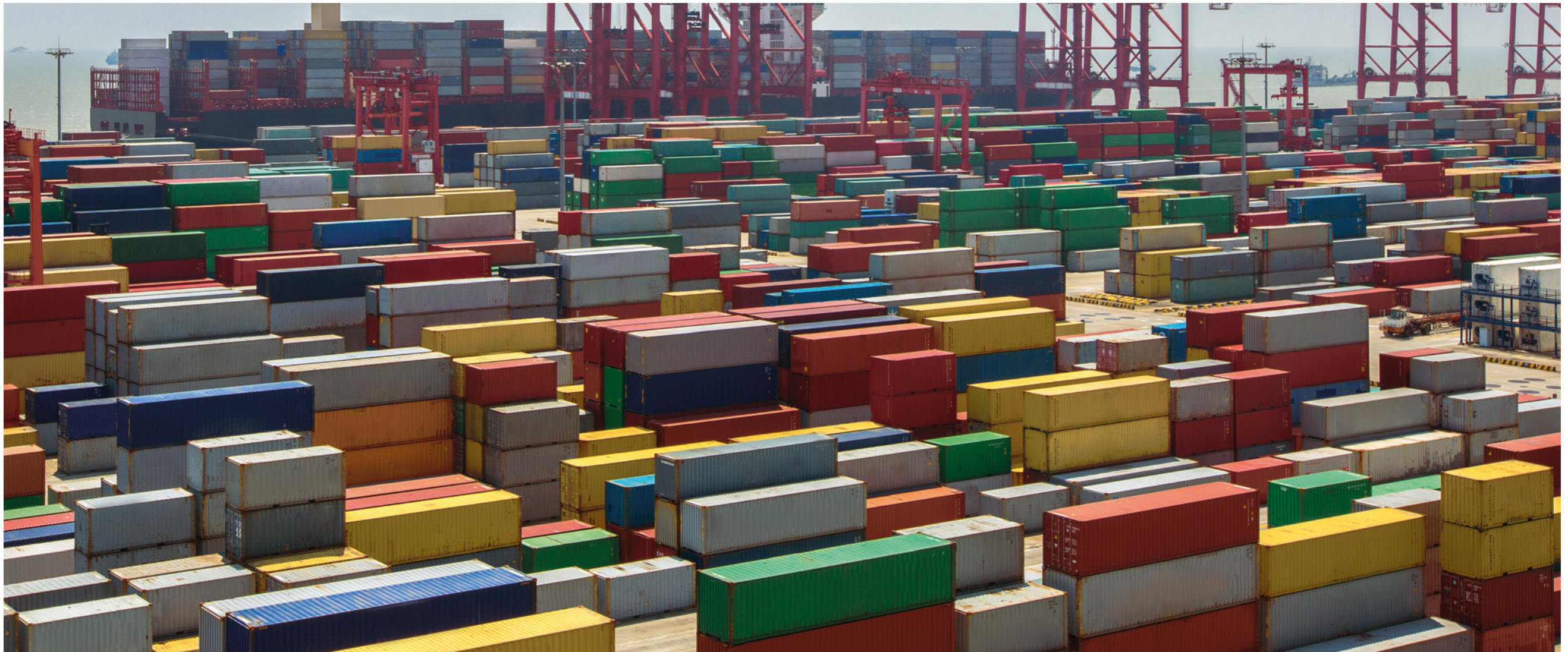
Durability



Comfort



Heat Resistance





Bias



ROCK STAR IND4

ROCK STAR PORT IND-4 has been specifically designed for empty container handlers and forklifts. In addition to excellent traction, the unique tread compound provides superior cut and chip resistance. ROCK STAR PORT IND-4 ensures outstanding load capacity and extraordinary durability.



Performance



Cut and Chip Resistance



Durability



High Load Capacity



Traction

Ø 24"	Tire size	Type	PR	LI/SS	Version	S.W. (mm)	O.D. (mm)	SLR (mm)	RC (mm)	RIM	
										Rec.	Alt.
	14.00 - 24	TT	28	-	PORT IND	390	1425	635	4350	10.00 W	-
	14.00 - 24	TL	28	-	PORT IND	390	1425	635	4350	10.00 W	-
	14.00 - 24	TT	28	-	PORT IND	390	1425	635	4350	10.00 WA	10.00 VA
	14.00 - 24	TL	28	-	PORT IND	390	1425	635	4350	10.00 WA	10.00 VA

PORT IND: Port Industrial

Ø 24"	Tire size	Type	PR	LI/SS	Version	S.W. (mm)	O.D. (mm)	SLR (mm)	RC (mm)	RIM	
										Rec.	Alt.
	14.00 - 24	TL	32	-	PORT IND	390	1425	635	4350	10.00 W	-
	14.00 - 24	TL	32	-	PORT IND	390	1425	635	4350	10.00 WA	10.00 VA
	14.00 - 24	TT	32	-	PORT IND	390	1425	635	4350	10.00 W	-
	14.00 - 24	TT	32	-	PORT IND	390	1425	635	4350	10.00 WA	10.00 VA

PORT IND: Port Industrial





Load Index Table

The load index is a code that defines a tire's maximum weight capacity at the speed given by its speed symbol provided that the usage conditions recommended by the Manufacturer are fully complied with.

Corresponding values of load index (LI) and load capacity per wheel (kg)

LI	kg	LI	kg	LI	kg	LI	kg
50	190	85	515	120	1400	155	3875
51	195	86	530	121	1450	156	4000
52	200	87	545	122	1500	157	4125
53	206	88	560	123	1550	158	4250
54	212	89	580	124	1600	159	4375
55	218	90	600	125	1650	160	4500
56	224	91	615	126	1700	161	4625
57	230	92	630	127	1750	162	4750
58	236	93	650	128	1800	163	4875
59	243	94	670	129	1850	164	5000
60	250	95	690	130	1900	165	5150
61	257	96	710	131	1950	166	5300
62	265	97	730	132	2000	167	5450
63	272	98	750	133	2060	168	5600
64	280	99	775	134	2120	169	5800
65	290	100	800	135	2180	170	6000
66	300	101	825	136	2240	171	6150
67	307	102	850	137	2300	172	6300
68	315	103	875	138	2360	173	6500
69	325	104	900	139	2430	174	6700
70	335	105	925	140	2500	175	6900
71	345	106	950	141	2575	176	7100
72	355	107	975	142	2650	177	7300
73	365	108	1000	143	2725	178	7500
74	375	109	1030	144	2800	179	7750
75	387	110	1060	145	2900	180	8000
76	400	111	1090	146	3000	181	8250
77	412	112	1120	147	3075	182	8500
78	425	113	1150	148	3150	183	8750
79	437	114	1180	149	3250	184	9000
80	450	115	1215	150	3350	185	9250
81	462	116	1250	151	3450	186	9500
82	475	117	1285	152	3550	187	9750
83	487	118	1320	153	3650	188	10000
84	500	119	1360	154	3750	189	10300



Speed Symbol

The speed code is a value that indicates the maximum admitted speed at which the tire can carry the weight corresponding to its load index provided that the usage conditions recommended by the Manufacturer are fully complied with.

Speed symbol	A1	A2	A3	A4	A6	A8	B	C	D	E	F	J
Km/h	5	10	15	20	30	40	50	60	65	70	80	100
mph	3	6	9	12	19	25	31	37	40	43	50	62



Corporate Office

Balkrishna Industries Ltd.

BKT HOUSE, C/15, Trade World, Kamala Mills Compound, Senapati Bapat Marg, Lower Parel, Mumbai - 400013, India
 Tel: (+91) 22-6666 3800 - Fax: (+91) 22-6666 3898/99 - e-mail: info@bkt-tires.com - bkt-tires.com

BKT Europe srl

Viale Della Repubblica,133
 20831 Seregno (MB), Italy
 Tel: (+39) 0362 33 03 28
 (+39) 0362 32 51 07
 Fax: (+39) 0362 23 24 72

BKT USA Inc.

202 Montrose West, Suite 240
 Copley, (Akron) Ohio 44321, USA
 Tel: (+1) 330 836 1090
 Fax: (+1) 330 836 1091
 Toll Free: (+1) 888 660 0662

BKT Tires (CANADA) Inc.

55 York Street, Suite 401
 Toronto, Ontario M5J 1R7, Canada
 Tel: AG/IND (+1) 905 641 5636
 OTR (+1) 780 888 5667
 Fax: (+1) 416 229 1711



bkt-tires.com

Proud Sponsor of



OFFICIAL OFF-HIGHWAY TIRE OF THE KFC BBL

