



GROWING TOGETHER

UNDERGROUND MINING



OTR TIRES



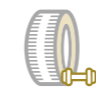













UNDERGROUND MINING

O T R T I R E S



Underground mining involves numerous daily difficulties. Beneath the surface, indeed, every risk is a constant threat: tough terrains, extreme working conditions, scaffolds and pits are issues to be dealt with everyday. Not only is this a challenge for operators in such difficult situations, but also for the tires which must withstand tough performance and maximum stress conditions. Rocky debris, sharp-edged walls, high loads and temperature – these are extremely critical conditions, in which BKT tires are definitely the best ally! Discover the full BKT product range with tires that are perfect for underground mining operations.

TECHNOLOGIES AND PERFORMANCE

 All Steel	 Block Pattern	 Extra Deep Tread	 Hard Rocky Surface
 Heavy Duty	 Smooth Tire	 Special Antistatic Compound	 Comfort
 Cut and Chip Resistance	 Cut Resistance	 Durability	 High Puncture Resistance
 Stability	 Traction		



Radials

Radial tires have cord plies that are arranged running radially from bead to bead around the tire. Sidewall and tread have independent functional features providing more flexibility, great performance, durability, and fuel economy.



Bias

Bias tires have cord plies that are arranged running diagonally from bead to bead across the tire. Layers overlap forming a crisscross pattern. This design features extraordinary sidewall resistance, puncture resistance and high load capacity.

UNDERGROUND MINING TIRES



EARTHMAX SR 41



[p. 6]



EARTHMAX SR 43



[p. 7]



EARTHMAX SR 49



[p. 8]



EARTHMAX SR 57



[p. 13]



MINE STAR



[p. 14]



POWER TRAX HD



[p. 15]



EARTHMAX SR 49 M



[p. 9]



EARTHMAX SR 53



[p. 10]



EARTHMAX SR 55



[p. 11]



POWER TRAX HD SMOOTH



[p. 16]



SM 53



[p. 17]



SM 55



[p. 18]



LIFTMAX LM 81



[p. 12]





Radial

L-4/E-4

B



EARTHMAX SR 41

EARTHMAX SR 41 is an All Steel radial tire perfect for loaders and dozers in haulage, loading and dozing applications. Thanks to its all steel structure and special block pattern, EARTHMAX SR 41 provides excellent resistance against punctures and an extended service life. In addition to long working hours without downtime, the tire ensures extraordinary comfort.

Technologies



All Steel



Block Pattern

Performance



Durability



Traction



Cut Resistance



Comfort

Ø 25"	Tire size	Type	STAR RATING	LI/SS	Version	TKPH	O.W.	O.D.	SLR	RC	TREAD DEPTH (mm)	RIM	
							(mm)	(mm)	(mm)	(mm)		Rec.	Alt.
26.5 R 25	TL	****	-	CRC	-	678	1742	775	5150	59.0	22.00/3.0	22.00/3.0	IF
29.5 R 25	TL	****	-	CRC	-	761	1861	830	5510	66.0	25.00/3.5	25.00/3.5	IF

CRC: Cut Resistance Compound



EARTHMAX SR 43

EARTHMAX SR 43 (L-4) is an All Steel radial tire specially designed for wheel loaders operating in severe rocky conditions, primarily underground mining. The tire delivers excellent performance in load and carry operations in open pit mines, quarries and scrap yards. Its unique tread design offers superior traction and stability. Thanks to its All Steel casing, EARTHMAX SR 43 (L-4) provides excellent durability, resistance to snags and punctures as well as a long service life.

Ø 25"	Tire size	Type	STAR RATING	LI/SS	Version	TKPH	O.W.	O.D.	SLR	RC	TREAD DEPTH (mm)	RIM	
							(mm)	(mm)	(mm)	(mm)		Rec.	Alt.
29.5 R 25	TL	***	-	CRC	-	785	1875	847	5644	61.0	25.00/3.5	-	-

Ø 29"	Tire size	Type	STAR RATING	LI/SS	Version	TKPH	O.W.	O.D.	SLR	RC	TREAD DEPTH (mm)	RIM	
							(mm)	(mm)	(mm)	(mm)		Rec.	Alt.
29.5 R 29	TL	***	-	CRC	-	768	2003	905	6311	62.0	25.00/3.5	24.00/3.5	26.00/3.5

CRC: Cut Resistance Compound



Radial

L-4

A2

Technologies



All Steel

Performance



Traction



Hard Rocky Surface



Durability



Stability



Radial

E-4/L-4

A2



EARTHMAX SR 49

EARTHMAX SR 49 is an All Steel radial tire that has been engineered for loaders and dozers, low profile dump trucks (LPDT) and load haul dumps (LHD). EARTHMAX SR 49 provides optimum performance in severe mining operations requiring exceptional traction and stability. The tire has a directional pattern and is made of a special cut-resistant compound providing excellent durability.

Ø 33"	Tire size	Type	STAR RATING	LI/SS	Version	TKPH	O.W. (mm)	O.D. (mm)	SLR (mm)	RC (mm)	TREAD DEPTH (mm)	RIM	
												Rec.	Alt.
	35/65 R 33	TL	****	-	CRC	-	899	2061	890	6125	59.0	28.00/3.5	-
	35/65 R 33	TL	***	-	CRC	-	899	2061	890	6125	59.0	28.00/3.5	-
	35/65 R 33	TL	****/****	-	CRC	-	899	2061	890	6125	59.0	28.00/3.5	-

CRC: Cut Resistance Compound

Performance



Traction



Cut Resistance



Stability



Durability



Radial

E-4/L-4

B



EARTHMAX SR 49 M

EARTHMAX SR 49 M is an All Steel radial tire with a special non-directional pattern designed for load haul dumps (LHD), low profile dump trucks (LPDT), loaders and dozers operating in severe rocky conditions primarily in underground mining. EARTHMAX SR 49 M is ideal for severe operations requiring exceptional traction and stability. The L-4 deep tread and the specially formulated UMS (underground mine service) compound provide a longer tread wear in addition to excellent resistance to rock cuts, and punctures.

Ø 25"	Tire size	Type	STAR RATING	LI/SS	Version	TKPH	O.W. (mm)	O.D. (mm)	SLR (mm)	RC (mm)	TREAD DEPTH (mm)	RIM	
												Rec.	Alt.
	26.5 R 25	TL	****	-	CRC	-	708	1782	801	5297	56.0	22.00/3.0	22.00/3.0 IF
	29.5 R 25	TL	****	-	CRC	-	780	1905	844	5600	57.0	25.00/3.5	25.00/3.5 IF

Ø 29"	Tire size	Type	STAR RATING	LI/SS	Version	TKPH	O.W. (mm)	O.D. (mm)	SLR (mm)	RC (mm)	TREAD DEPTH (mm)	RIM	
												Rec.	Alt.
	29.5 R 29	TL	***	-	CRC	-	786	2006	906	6320	60.0	25.00/3.5	24.00/3.5, 26.00/3.5
	29.5 R 29	TL	****	-	CRC	-	786	2006	906	6320	60.0	25.00/3.5	24.00/3.5, 26.00/3.5

CRC: Cut Resistance Compound

Performance



Traction



Cut Resistance



Stability



Durability





Radial



EARTHMAX SR 53

EARTHMAX SR 53 is an All Steel radial tire specially designed for loaders or dozers, low profile dump trucks (LPDT) and load haul dumps (LHD) operating in severe rocky conditions, including underground operations and scrap yards. The deep L-5 tread and the cut-resistant compound provide an extended wear life in addition to excellent traction and stability.

Technologies



Hard Rocky Surface



Extra Deep Tread

Performance



Stability



Durability



Cut Resistance



Traction

Ø 25"	Tire size	Type	STAR RATING	LI/SS	Version	TKPH	O.W.	O.D.	SLR	RC	TREAD DEPTH (mm)	RIM	
							(mm)	(mm)	(mm)	(mm)		Rec.	Alt.
Ø 25"	17.5 R 25 UMS	TL	**	-	CRC	-	435	1400	637	4214	65.5	14.00/1.5	-
	17.5 R 25	TL	***	188A2	CRC	-	435	1400	637	4214	65.5	14.00/1.5	-
	26.5 R 25 UMS	TL	**	-	CRC	-	680	1788	800	5376	95.0	22.00/3.0	22.00/3.0 IF
	29.5 R 25 UMS	TL	**	-	CRC	-	770	1912	859	5755	103.0	25.00/3.5	25.00/3.5 IF
Ø 33"	35/65 R 33 UMS	TL	**	-	CRC	-	910	2063	915	6215	92.0	28.00/3.5	-
	35/65 R 33	TL	***	-	CRC	-	910	2063	915	6215	92.0	28.00/3.5	-

CRC: Cut Resistance Compound



EARTHMAX SR 55

EARTHMAX SR 55 is an All Steel radial tire specially designed for loaders, dozers and low haul dumps operating in the most severe quarry and mining operations, and at scrapyards. Thanks to excellent cut protection resulting from the extra-deep and smooth tread design, EARTHMAX SR 55 is able to achieve peak productivity with reduced downtime along with excellent durability. Equipment operators will also appreciate extraordinary stability and traction.



Radial



Technologies



Smooth Tire



Extra Deep Tread

Performance



Stability



Durability



Cut Resistance



Traction

Ø 24"	Tire size	Type	STAR RATING	LI/SS	Version	TKPH	O.W.	O.D.	SLR	RC	TREAD DEPTH (mm)	RIM		
							(mm)	(mm)	(mm)	(mm)		Rec.	Alt.	
Ø 24"	12.00 R 24	TT	**	175A2	CRC	-	305	1274	572	3787	58.0	8.50/1.3	8.0,9.0	
Ø 25"	17.5 R 25	TL	**	182A2	CRC	-	453	1399	630	4211	68.0	14.00/1.5	14.00/1.3 DC ; 13.00/1.4	
	18.00 R 25	TL	***	204A2	CRC	-	513	1667	733	4852	86.0	13.00/2.5	15.00/2.5 ; 13.00/2.5 IF	
20.5 R 25	TL	**	193A2	CRC	-	535	1543	700	4644	74.0	17.00/2.0	-		
26.5 R 25	TL	**	209A2	CRC	-	690	1786	810	5375	95.0	22.00/3.0	22.00/3.0 IF		
29.5 R 25	TL	**	216A2	CRC	-	777	1912	860	5755	104.0	25.00/3.5	25.00/3.5 IF		
Ø 29"	29.5 R 29	TL	**	218A2	CRC	-	775	2009	911	6047	104.0	25.00/3.5	24.00/3.5, 26.00/3.5	
Ø 33"	35/65 R 33	TL	**	224A2	CRC	-	900	2065	915	6175	99.0	28.00/3.5	-	

CRC: Cut Resistance Compound





Radial



A5



LIFTMAX LM 81

LIFTMAX LM 81 has been specially designed for forklift equipment in material handling and industrial applications. This All Steel radial tire offers lower vibration, and greater stability as well as increased durability. The special antistatic tread compound provides excellent wear resistance even under the most demanding operating conditions.

Technologies



Special Antistatic Compound

Performance



Stability



Durability

Ø 15"	Tire size	Type	STAR RATING	LI/SS	Version	TKPH	O.W.	O.D.	SLR	RC	TREAD DEPTH (mm)	RIM	
							(mm)	(mm)	(mm)	(mm)		Rec.	Alt.
8.25 R 15	TL	-	153 A5	STD	-	234	836	-	-	33.5	6.5	7.0	
Ø 20"	10.00 R 20	TL	-	166 A5	STD	-	275	1066	-	-	35.0	7.50	-
12.00 R 20	TL	-	176 A5	STD	-	314	1134	-	-	38.5	8.50	8.0	

STD: Standard



EARTHMAX SR 57

EARTHMAX SR 57 is an All Steel radial tire specially engineered for loaders, dozers and utility vehicles operating in underground mines. The tire provides superior traction, stability and comfort on severe and rocky surfaces. The L-5 extra deep tread and the specially formulated UMS (underground mine service) compound provide a longer tread wear in addition to extraordinary resistance to rock cuts, and punctures.



Radial



L-5



A2

Technologies



Hard Rocky Surface



Extra Deep Tread

Performance



Stability



Durability



Cut Resistance



Traction

Ø 15"	Tire size	Type	STAR RATING	LI/SS	Version	TKPH	O.W.	O.D.	SLR	RC	TREAD DEPTH (mm)	RIM	
							(mm)	(mm)	(mm)	(mm)		Rec.	Alt.
7.50 R 15	TT	*	-	CRC	-	223	845	-	-	46.0	6.00	6.5	
8.25 R 15	TT	*	-	CRC	-	240	880	-	-	47.0	6.50	7.00	
Ø 20"	12.00 R 20	TT	*	-	CRC	-	318	1180	-	-	56.0	8.50	14.00/1.3 DC ; 13.00/1.4
Ø 25"	18.00 R 25	TL	**	204 A2	CRC	-	515	1651	-	-	80.0	13.00/2.5	-

CRC: Cut Resistance Compound





MINE STAR

MINE STAR is a bias-ply tire which is an excellent choice for heavy-duty underground mining operations. It features high cut/chip and puncture resistance providing improved operational efficiency. MINE STAR is made of a special compound and features a special tread design resulting in an extended tire life-cycle.

Ø 15"	Tire size	Type	PR	LI/SS	Version	TKPH	O.W. (mm)	O.D. (mm)	SLR (mm)	RC (mm)	TREAD DEPTH (mm)	RIM	
												Rec.	Alt.
	8.25 - 15	TT	20	-	STD	-	244	848	-	-	19.0	6.5	6.0; 7.0
	32 X 14.50 / 15 - 15	TT	28	-	STD	-	350	825	-	-	23.5	11.0	11.50; 11.00 BD; 10.50
	35 X 15 -15	TT	20	-	STD	-	372	885	-	-	23.5	11.0	11.50; 11.00 BD
	35 X 15 -15	TT	32	-	STD	-	372	885	-	-	23.5	11.0	11.50; 11.00 BD
	38 X 16 -15	TT	32	-	STD	-	400	990	-	-	28.5	11.5	-

STD: Standard



POWER TRAX HD

POWER TRAX HD premium tire is specially designed for equipment in port and underground mining applications. Its deep tread, the extra thick sidewall and the tough casing provide exceptional durability minimizing the risk of punctures and accidental damages. The tire features excellent cut and chip resistance, which is particularly suitable for rough and hard surfaces. The specially designed rim guard ensures protection against flats and wheel damage in the rim flange area.

Ø 20"	Tire size	Type	PR	LI/SS	Version	TKPH	O.W. (mm)	O.D. (mm)	SLR (mm)	RC (mm)	TREAD DEPTH (mm)	RIM	
												Rec.	Alt.
	12.00 - 20	TT	20	-	STD	-	320	1150	-	-	34.5	8.50	9.0
	12.00 - 20	TT	28	-	STD	-	320	1150	-	-	34.5	8.50	9.0

STD: Standard



Technologies



Extra Deep Tread

Performance



Durability



High Puncture Resistance



Cut and Chip Resistance



Stability



Bias

Technologies



Heavy Duty



Extra Deep Tread

Performance



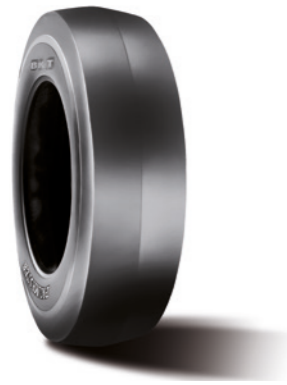
Durability



Stability



Cut and Chip Resistance



POWER TRAX HD SMOOTH

POWER TRAX HD SMOOTH is a bias-ply tire specially designed for port and underground mining operations. The special sidewall protection along with a solid tread prevents cut and puncture damages that are common in such demanding environments. When you need to move heavy-duty loads, Power Trax HD Smooth is your ideal partner.

Ø 20"	Tire size	Type	PR	LI/SS	Version	TKPH	O.W. (mm)	O.D. (mm)	SLR (mm)	RC (mm)	TREAD DEPTH (mm)	RIM	
												Rec.	Alt.
	12.00 - 20	TT	20	-	STD	-	320	1150	-	-	32.5	8.50	9.0
	12.00 - 20	TT	28	-	STD	-	320	1150	-	-	32.5	8.50	9.0

STD: Standard



SM 53

SM 53 has been specially designed for loaders in underground mining and loading applications. It features high stability as well as a smooth tread design providing excellent cut resistance.

Ø 20"	Tire size	Type	PR	LI/SS	Version	TKPH	O.W. (mm)	O.D. (mm)	SLR (mm)	RC (mm)	TREAD DEPTH (mm)	RIM	
												Rec.	Alt.
	9.00 - 20	TT	16	-	STD	-	266	1040	472	3080	23.0	7.0	-

STD: Standard

Technologies



Heavy Duty



Extra Deep Tread

Performance



Durability



Stability



Cut and Chip Resistance



Bias



L-3S

Performance



Stability



Durability



Bias



SM 55 L5S

SM 55 (L-5S) is a bias-ply tire ideal for underground mining operations. The specially designed cut-and-chip-resistant tread compound minimizes punctures thereby reducing machine downtime. The extra-deep L-5 S tread depth guarantees an extended tire life. The tire is also available in a steel-belted version.

Technologies



Heavy Duty



Extra Deep Tread

Performance



Stability



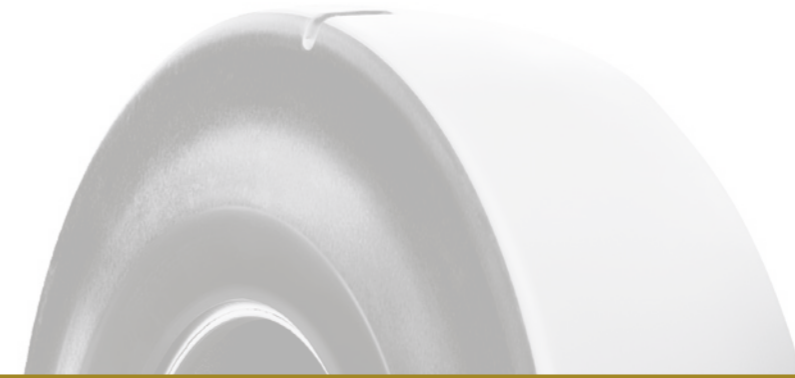
Durability



Cut and Chip Resistance

Ø 12"	Tire size	Type	PR	LI/SS	Version	TKPH	O.W. (mm)	O.D. (mm)	SLR (mm)	RC (mm)	TREAD DEPTH (mm)	RIM	
												Rec.	Alt.
Ø 12"	7.00 - 12	TT	14	-	STD	-	205	710	323	2159	31.0	5.00 S	-
	7.00 - 12	TT	16	-	STD	-	205	710	323	2159	31.0	5.00 S	-
	7.00 - 12	TT	16	-	DB	-	205	710	323	2159	31.0	5.00 S	-
Ø 20"	9.50 - 20	TT	16	-	STD	-	275	1065	505	3280	57.5	7.5	-
Ø 24"	12.00 - 24	TT	20	-	STD	-	310	1275	594	3777	60.0	8.5	7.33 V; 8; 8.00 V; 8.50 V
	12.00 - 24	TT	24	-	STD	-	310	1275	594	3777	60.0	8.5	7.33 V; 8; 8.00 V; 8.50 V
	12.00 - 24	TT	24	-	SB	-	310	1275	594	3777	60.0	8.5	7.33 V; 8; 8.00 V; 8.50 V
Ø 25"	17.5 - 25	TL	20	-	STD	-	438	1365	631	4043	63.5	14.00/1.5	14.00/1.3; 14.00/1.4 (DC)
	17.5 - 25	TL	20	-	SB	-	438	1365	631	4043	63.5	14.00/1.5	14.00/1.3; 14.00/1.4 (DC)
	17.5 - 25	TL	24	-	STD	-	438	1365	631	4043	63.5	14.00/1.5	14.00/1.3; 14.00/1.4 (DC)
	17.5 - 25	TL	24	-	AR	-	438	1365	631	4043	63.5	14.00/1.5	14.00/1.3; 14.00/1.4 (DC)
	17.5 - 25	TL	24	-	SB	-	438	1365	631	4043	63.5	14.00/1.5	14.00/1.3; 14.00/1.4 (DC)

STD: Standard - DB: Dual Bead - SB: Steel Belted - AR: Arashield



Ø 25"	Tire size	Type	PR	LI/SS	Version	TKPH	O.W. (mm)	O.D. (mm)	SLR (mm)	RC (mm)	TREAD DEPTH (mm)	RIM		
												Rec.	Alt.	
Ø 25"	18.00 - 25	TL	28	-	STD	-	517	1665	765	5118	83.0	13.00/2.5	15.00/2.5	
	18.00 - 25	TL	28	-	SB	-	517	1665	765	5118	83.0	13.00/2.5	15.00/2.5	
	18.00 - 25	TL	32	-	STD	-	517	1665	765	5118	83.0	13.00/2.5	15.00/2.5	
	18.00 - 25	TL	40	-	STD	-	517	1665	765	5118	83.0	13.00/2.5	15.00/2.5	
	18.00 - 25	TL	40	-	AR	-	517	1665	765	5118	83.0	13.00/2.5	15.00/2.5	
	18.00 - 25	TL	40	-	SB	-	517	1665	765	5118	83.0	13.00/2.5	15.00/2.5	
	26.5 - 25	TL	28	-	SB	-	700	1798	816	5322	96.0	22.00/3.0	-	
	26.5 - 25	TL	32	-	SB	-	700	1798	816	5322	96.0	22.00/3.0	-	
	Ø 29"	29.5 - 29	TL	28	-	SB	-	755	2020	882	6021	104.0	25.00/3.5	24.00/3.5
		29.5 - 29	TL	40	-	AR	-	755	2020	882	6021	104.0	25.00/3.5	24.00/3.5
29.5 - 29		TL	40	-	SB	-	755	2020	882	6021	104.0	25.00/3.5	24.00/3.5	
Ø 33"	35/65 - 33	TL	48	-	AR	-	920	2085	-	-	98.0	28.00/3.5	-	
	35/65 - 33	TL	48	-	SB	-	920	2085	-	-	98.0	28.00/3.5	-	

SB: Steel Belted - STD: Standard - AR: Arashield

Load Index Table

The load index is a code that defines a tire's maximum weight capacity at the speed given by its speed symbol provided that the usage conditions recommended by the Manufacturer are fully complied with.

Corresponding values of load index (LI) and load capacity per wheel (kg)

LI	kg	LI	kg	LI	kg	LI	kg
50	190	85	515	120	1400	155	3875
51	195	86	530	121	1450	156	4000
52	200	87	545	122	1500	157	4125
53	206	88	560	123	1550	158	4250
54	212	89	580	124	1600	159	4375
55	218	90	600	125	1650	160	4500
56	224	91	615	126	1700	161	4625
57	230	92	630	127	1750	162	4750
58	236	93	650	128	1800	163	4875
59	243	94	670	129	1850	164	5000
60	250	95	690	130	1900	165	5150
61	257	96	710	131	1950	166	5300
62	265	97	730	132	2000	167	5450
63	272	98	750	133	2060	168	5600
64	280	99	775	134	2120	169	5800
65	290	100	800	135	2180	170	6000
66	300	101	825	136	2240	171	6150
67	307	102	850	137	2300	172	6300
68	315	103	875	138	2360	173	6500
69	325	104	900	139	2430	174	6700
70	335	105	925	140	2500	175	6900
71	345	106	950	141	2575	176	7100
72	355	107	975	142	2650	177	7300
73	365	108	1000	143	2725	178	7500
74	375	109	1030	144	2800	179	7750
75	387	110	1060	145	2900	180	8000
76	400	111	1090	146	3000	181	8250
77	412	112	1120	147	3075	182	8500
78	425	113	1150	148	3150	183	8750
79	437	114	1180	149	3250	184	9000
80	450	115	1215	150	3350	185	9250
81	462	116	1250	151	3450	186	9500
82	475	117	1285	152	3550	187	9750
83	487	118	1320	153	3650	188	10000
84	500	119	1360	154	3750	189	10300

Speed Symbol

The speed code is a value that indicates the maximum admitted speed at which the tire can carry the weight corresponding to its load index provided that the usage conditions recommended by the Manufacturer are fully complied with.

Speed symbol	A1	A2	A3	A4	A6	A8	B	C	D	E	F	J
Km/h	5	10	15	20	30	40	50	60	65	70	80	100
mph	3	6	9	12	19	25	31	37	40	43	50	62



Corporate Office

Balkrishna Industries Ltd.

BKT HOUSE, C/15, Trade World, Kamala Mills Compound, Senapati Bapat Marg, Lower Parel, Mumbai - 400013, India
 Tel: (+91) 22-6666 3800 - Fax: (+91) 22-6666 3898/99 - e-mail: info@bkt-tires.com - bkt-tires.com

BKT Europe srl

Viale Della Repubblica,133
 20831 Seregno (MB), Italy
 Tel: (+39) 0362 33 03 28
 (+39) 0362 32 51 07
 Fax: (+39) 0362 23 24 72

BKT USA Inc.

202 Montrose West, Suite 240
 Copley, (Akron) Ohio 44321, USA
 Tel: (+1) 330 836 1090
 Fax: (+1) 330 836 1091
 Toll Free: (+1) 888 660 0662

BKT Tires (CANADA) Inc.

55 York Street, Suite 401
 Toronto, Ontario M5J 1R7, Canada
 Tel: AG/IND (+1) 905 641 5636
 OTR (+1) 780 888 5667
 Fax: (+1) 416 229 1711



bkt-tires.com

Proud Sponsor of



OFFICIAL OFF-HIGHWAY TIRE OF THE KFC BBL

